



## Inside

# New Year's honour for Oakura photographer

Photography has taken Fay Looney all over the world, and in April it will take her to Government House in Wellington. Accompanied by her grandchildren she will receive the Member of the New Zealand Order of Merit (MNZM) award for services to the arts, particularly photography. The award was announced in this year's New Year's Honours List.

The Oakura photographer's New Zealand landscape books have sold more than 60,000 copies. In 2014 she opened Koru on Koru Gallery in her purpose built studio on Koru Rd. which offers free space for Taranaki artists and occasionally other

New Zealand artists to exhibit their work. Last year Koru on Devon opened in Devon St's CBD on the same basis

She has been the public face of the Oakura Arts Trail which she helped set up, and which attracts hundreds of visitors to Oakura art studios during the Taranaki Garden Festivals.

Koru Galleries now operate independently in the festival, albeit with some of the same artists.

Her photos have promoted New Zealand overseas and been used on New Zealand postage stamps. In 2004 she was the first woman President of the New Zealand Institute of Photography. Closer to home she has chaired the Kaitake Community Board and Oakura School Committee, and she and husband Harry were founding members of the new Kaitake Golf Club.

Fay has spent most of her



Fay Looney MNZM

life on Koru Road, where she and Harry farmed. After Harry died Fay upgraded her studio and created Koru on Koru Gallery and sculpture garden.

Last year, New Plymouth couple Shaun and Marie Grace, who were visitors to her Gallery during the Taranaki Fringe Garden Festival offered Fay and her core group of artists space in the central CBD where they have been trading as Koru on Devon for the past 11 months, a not for profit business manned by volunteers and open from Tuesday to Saturday, 10am 2-30 pm. Koru on Koru is open on weekends, although Fay says if she is home and anyone contacts her she is happy to open at other times. Koru on Devon is a unique well lit space large enough to offer exhibition space for hire for any visiting artists who wish to stage their own exhibition at a 25% commission fee plus hire. The group's work remains on show within the gallery.

"I have a wonderful curator Lynda Mcfetridge, and we work together well. We also don't have a committee, we work as a team which is a big advantage," says Fay. "So far we are self funding thanks to some very loyal clients and effective marketing."

She points to a growing number of artists working around the Taranaki coast.

"Many are unable to live on their art and have full time jobs. The galleries are exposing their work to a wider audience.

"There's not a lot of publicity avenues generally for many artists. You have to have a high profile to attract media attention generally. For emerging artists that's a real shame."

She says Koru on Devon has attracted a lot of interest from out-of-town visitors, particularly from Auckland and Wellington

"I believe the CBD could be a real arts destination if we could get realistic backing from the Council and encourage people to market

together. We have many opportunities and the talent to promote art tourism."

Fay's particular passion is photography, something she says she got into by accident. She was selling school photography for an Australian company and then decided to take photos herself, and from there started her own school photography business.

"I reckon I've travelled most of the gravel around the North Island," she says. "I started on the Whanganui River Road when it was all gravel. There were four schools up there, and now there's only one."

She says sometimes she would be photographing up to a 1000 children a day, other times only 10.

From school photography she moved into sports photography and beyond.

"I discovered my camera could take me to places I'd never dreamed of," she says.

These have included major international sporting occasions like the Barcelona Olympics and golf and equestrian events. It has also led to long standing friendships with the likes of equestrian Mark Todd. After Todd won Badminton in 1980 and she met him, he asked her to carry his trophy home to give to his parents. She wrote a story about this for Horse and Pony magazine and was later contacted by Bob Parker, host of the This is Your Life TV show who asked if he could quote from the article for an upcoming show with Todd as the subject. He also invited her to be on the show,

which led to her meeting the other guests including Mark Phillips, husband of Princess Anne.

On another occasion she recalls being at the US Golf Open at Pebble Beach and being given a lift by a very large American who turned out to be Bing Crosby's caterer whose team traditionally catered for the tournament leading to a meeting with the old crooner's wife Kathy as well as former US President Gerald Ford.

She lists golfing legend Arnold Palmer and Sir Edmund Hillary among others she has met.

Then there are the books, six of them to date. This all began when leading photographer and friend Anne Geddes suggested she put together a book of photos from her travels.

Fay, whose East Coast Pohutukawa image has been used widely to promote New Zealand, and whose Taranaki Rugby Jersey image has helped promote the Rugby World Cup says the secret of a good photo is being in the right place at the right time with your camera.

Although she has not had any formal training, she attends seminars where she can and is always learning.

In her studio, which she opened the same year as her first grandchild was born, she points to examples of her work now printed on brushed aluminium. It is a discovery she made on a trip to Alaska, and it's a medium she feels brings new life and light to her images.



Robotics champion Riley wants more Coastal girls to take up the activity. See page 13.



Zala a unique shop in Eltham. Turn to page 15.



We all scream for Tip Top ice cream. Page 17.



Phoenix 45 rises from the ashes. See page 7.



Tintin comes to Wiremu Road in this painting by Graham Kirk. See page 10.



Americana is coming soon. (February 20 to 23).

## Penniall Jordan

*The heat is on!*

**Servicing Taranaki Since 1973**

*Don't forget about your Log Fire, see us for Wood Fires, Servicing and Parts!*



**Penniall Jordan**


- PLUMBING • HEATING
- GASFITTING • CENTRAL HEATING
- DRAIN LAYING

191 Broadway  
Stratford

**Ph 06 765 5336**

[www.pennialljordan.co.nz](http://www.pennialljordan.co.nz)

COASTAL  
MACHINERY SALES  
REPRESENTATIVE



JOHN  
JUDGE

Phone  
**027 538 7387**  
**06 757 5582**

For all your  
machinery enquiries

NORWOOD

Farm Machinery Centre

146 GILL ST  
NEW PLYMOUTH  
PH 06 757 5582

**"Let's create your business growth strategy together"**  
 Your only local community accounting firm



**HUGHSON & ASSOCIATES**  
 Accounting for the future, today  
 Hawera - Opunake - 06 278 4169  
 OPUNAKE OFFICE  
 OPEN EVERY WEDNESDAY FROM 10am TO 3.30pm

**HARDINGS**  
 FUNERAL SERVICES LTD  
 17 REGENT ST HAWERA

*Our professional attention to detail & empathy is our hallmark*

**PHONE 06 278 8633**  
 SERVING OUR COMMUNITIES FOR 3 GENERATIONS

**RENTAL VEHICLES**



- CHARTER BUSES
- VANS
- TOUR BUSES

**ALUMINIUM SCAFFOLDING FOR HIRE**  
 \$35 per day, \$50 weekend.  
 More than 6 days \$30 per day.

**WATERBLASTER FOR HIRE**  
 Petrol 3000 psi 15L/minC  
 Cost: Half day \$90, Full day \$120, Weekend \$130. Friday after 3pm return Monday 9am.  
 Bond for waterblaster and scaffolding \$50.  
 For more information contact Tracey or Christine at

**PICKERING MOTORS**  
 11 TENNYSON ST OPUNAKE PH (06) 761-8363  
 0800 22 11 20 Email: pickering.motors@xtra.co.nz

**OPUNAKE & COASTAL NEWS**

Registered office: 23 Napier Street, PO Box 74, Opunake  
 Phone: Office (06) 761-7016, A/h (06) 761-8206

For advertising, email: ads@opunakecoastalnews.co.nz  
 For editorial, email: editorial@opunakecoastalnews.co.nz  
 For accounts, email: accounts@opunakecoastalnews.co.nz

www.opunakecoastalnews.co.nz  
 Editor: Bernice McKellar  
 Journalists/Sales: Rolland McKellar, Bryan Kirk  
 Advertising/Production: Vanessa Smith  
 Production/IT: Shane Butler  
 Delivery: Thursday, fortnightly  
 Registered as a newspaper.

Member of the Community Newspapers Association of New Zealand



The Opunake and Coastal News is distributed free to every home and business within the rural area bounded in the north by the New Plymouth city border, extending east to Egmont Village, and around to the edge of Stratford, south to the Hawera city border and inland to Kaponga and through Eltham.

Send your your views to:  
 Letters to the Editor  
 23 Napier Street, Opunake.  
 Fax: (06) 761 7016  
 email: editorial@opunakecoastalnews.co.nz  
 You are welcome to use a pseudonym but must supply your name and address to us.

**To shop or not to shop in Opunake**

There was a recent letter re the benefits of shopping in Opunake vis-à-vis the bigger towns. The writer stated that, "if you add fuel and wear/tear on to a visit to another town for shopping, it would not be worth the trip." The writer was trying to justify the added costs to shopping locally.

Well, it is certainly worth the drive to Hawera to shop, as the variety of food/products is way superior. A tiny can of cat food is at least 40cents more in Opunake, and variety is limited. Anyone who has a fussy cat will know that some cats do not like the regular brands on offer here.

A brand of fruit juice that I like has four flavours in Hawera, compared to just two here. A fizzy drink (real fruit flavour, limited sugar) was 80 cents in Hawera, and the same product (although chilled) was approx. \$3.80 here.

There is now an Asian store in Hawera, which appeals to the Epicurean types that enjoy flavour, and variety in their creations. Chickens

(fresh or frozen) are just a portion of the cost outside of Opunake.

Although Hawera was named as being one of the worst towns in NZ (2018), there are plenty of added benefits to shopping there - a trip to the movies, or the Aquatic Centre, before or after your shop. Op shops are plentiful, and prices are excellent, for those who enjoy finding a bargain, and the recycling benefits for our planet are mega.

So, it's well worth a trip to a bigger town for shopping, and other pursuits...

*Yvonne Wara Ward, Opunake*

**Reply: United we stand... divided we fall**

Some years ago I visited England. Not far from where I was staying was a little town called Marshfield. It was about the size of Opunake. Two rows of shops.

This was incidentally in the days before the Internet.

It was a quaint little town. Lots of little shops were apparent as you drove through. Around 8km up the road in the middle of nowhere was a big supermarket where you could buy everything. It was called Sainsburys. The



**Letters to the Editor**

people I was staying with would do all their shopping at Sainsburys and I accompanied them.

It was a huge barn of a place and they had all their customers locked in by way of a Christmas Club. From memory one percent of your purchases were credited to you and went into this Christmas Club. And it worked a treat.

But what of Marshfield? One day I walked through it. I was surprised to find that all the shops were in fact empty. Closed. Marshfield, when you looked closely was not a motley assemblage of interesting little specialist shops, but really a ghost town.

Sainburys, by contrast, up the road however was thriving. It offered nothing more than place to shop. There was no community, no newspaper, no town hall, no events, no personal service etc. Sainburys had killed Marshfield.

But it was a lesson I've always remembered.

New Zealand has its own Sainburys in different forms. One I recall closed an Opunake shoeshop some years ago.

And now, in addition, we have a sort of international supermarket - online shopping.

The thing is if people do not

take advantage of the local businesses that are providing a service to small towns they will not survive.

If people live locally and are running businesses in town and this includes schools they need to be supporting local businesses. Use the services. Pay your bills at the local post shop - not online. This also applies to sports clubs, and other recreational groups.

I continue to hear stories of groups who touch local businesses for sponsorship and then when they need to buy equipment go out of town.

I hope anyone who has done this may reflect on the impact of what they're doing to the local businesses and how they are affected.

So I hope people are appreciative of the services they have in small towns and of the intrepid hardworking business owners' attempts to continue to provide a service.

Use it or lose it. For small towns to survive we need to shop local.

*Bernice McKellar*

*This was published as an editorial several years ago but it seems timely to reinforce the message to all those who enjoy the benefits of living rurally/ in a small town.*

*Editor*

**ADELPHOS**

Anxiety is a normal and reasonable emotion. But it's a disorder when we live in unreasonable tension, fear or worry. Mental health professionals agree that anxiety disorders have ballooned in our times. An anxiety disorder occurs when worry or fear invades the mind and takes possession of our present thinking. A 2012 New Zealand Health survey found that 15% of Kiwis suffer from a generalised anxiety disorder (GAD) manifesting in a variety of debilitating symptoms, many requiring medication and counselling. A 2009 World Health Organisation (WHO) study estimated that 25% of Kiwis will experience GAD

**The anxiety rollercoaster**

in their lifetime. New Zealand guidance counsellors report an alarmingly steady increase in teenage anxiety and self-harm referrals.

No informed person can deny that climate change and rising tides are causing worldwide havoc. All continents have been affected by diverse and increasing natural disasters. It seems that these "are" realistic anxieties to be confronted in postmodern society. Panic disorder, anorexia, eating disorders, agoraphobia, OCD... There are too many GAD anxieties to list. We might become "unrealistically" anxious about our health, family, school, ex-partners, money, friends, wrinkles, weight or

what others think about us. Anxiety cheats us of our true potential and robs us of the ability to live in the present.

Being a Christian doesn't exempt someone from GAD. So here's a few anti-anxiety tips for people of all religions, shapes, colours and sizes. The Psalms in the Bible are loaded with anti-anxiety verses. Phillipians 4:6-8 is my personal favourite anti-anxiety remedy: *Do not be anxious about anything, but in everything with prayer, petitions and thanksgiving make your requests known to God. And the peace of God which passes all understanding will keep your hearts and minds in Christ Jesus.* After all Jesus has

been called "The Prince of Peace".

Also, each day try listing three different things you are thankful for, practice Christian meditation or listen to calming music. A Naki coast beach walk could be a great benefit as long as you stay in the present moment and stop worrying about the dairy payout or whatever. Anxiety wants to obsess and rob your present with past regrets and future illusions.

Susan Jeffers wrote a popular best seller, *Feel the Fear and Do it Anyway*. She offers some practical tips to help confront your fears and anxieties eyeball to eyeball. If you don't deal with or keep being overcome by the anxiety bully, you'll become the perpetually addicted masochistic victim. Live and savour every mindful present moment. Ralph Waldo Emerson said, "You are what you think all day long". Remember the past, plan for the future and live in the present and you might be surprised at the real person hiding inside of you.

*Adelphos*

*PS. Remember to worship The Prince of Peace this Sunday at your Opunake, coastal rural churches and other churches in the readership of the OCN.*



**BRIAN HILL**  
 BD HILL BUILDING

- \*New homes
- \*Alterations
- \*Rotary cowsheds
- \*Herringbone dairy sheds
- \*Concrete driveways
- \*Bridges
- \*Pre-cast silage pits
- \*Hay barns & implement sheds
- \*Concrete races
- \*Repair work

**We are a licensed building practitioner and Master Builders member. Experienced in the design and consent process.**



0274 442 703

# Letters to the Editor

Continued

## Influenza centenary

It is with appreciative thanks to see such an eye-popping feature that exceeded all my expectations and that it was also not alone. Having such an amenable response to publishing history in this way has been very encouraging. The Opunake Coastal News is to be commended for producing a community newspaper that is eyed with a degree of envy from the Hutt Valley. It is certainly a beacon of how to serve a community and provide an invaluable resource for the future. To other readers please treasure and support this gem. Elsewhere readers have noticed, with some

concern, that local papers have deteriorated markedly in recent times and the idea of getting more than a couple of 'history' paragraphs in the paper can be but a dream.

*Dawn Chambers*

*Dawn is researching the influenza epidemic of 1918 with the eventual aim of publishing a book.*

*If anyone has any stories about the influenza they can share Dawn would like to hear from them. She can be contacted via the website [www.nzpictures.co.nz/opunake.htm](http://www.nzpictures.co.nz/opunake.htm) or else via the Opunake & Coastal News.*

## Help fight New Zealand's single biggest killer

With one in five Kiwis dying from heart disease, the Heart Foundation needs more people to join with it by volunteering as street collectors for its Big Heart Appeal 2019 next month.

Every year over 6,500 New Zealanders die of heart disease. While the time commitment involved as a volunteer for a few hours on one day is small, the reward is huge and will play a vital role in the fight against New Zealand's single biggest killer, heart disease.

Funds raised during the Heart Foundation's annual appeal are used to support heart-related research and specialist training for cardiologists. The Heart Foundation is New Zealand's leading independent funder of heart research. Since 1968, it has funded more than \$70 million in research and specialist training for cardiologists. Additionally,

we also perform a wide range of activities to help support people living with heart disease, and their families, and provide educational programmes and campaigns that promote heart-healthy living.

The Big Heart Appeal street collections will take place on Friday 22 February and Saturday 23 February and we need volunteers in all regions.

To find out more about volunteering for the Big Heart Appeal and to sign up, visit <https://www.heartfoundation.org.nz/volunteer>

*Gail McIntyre  
Fundraising Manager*

## Does the Opunake League of mothers still exist?

Does anyone in Opunake know if they still have the Opunake League of Mothers operating still and know of a contact I can have to speak to someone? Thank you.

*Tibor Gecse.*

## A disaster in the making

Well before they went ahead with the artificial reef at Opunake, wouldn't it have been better and more sensible to actually wait and see how the Mt Maunganui artificial reef went?

It's now come to a horrible disaster. It cost the Bay of Plenty Regional Council \$350,000 to get their 27 geotextile bags removed, and now our own council is having the same problem, as at the moment geotextile bags are lying dormant on the seabed of the main beach.

There was an idea to split the bags, and Chris Fuller who opposed the project said that if this was done, it would be inviting a monumental environmental disaster. He had been told by a marine biologist that these geotextile bags have a life span of 20-30 years.

Our Regional Council has approached the South Taranaki District Council but they have totally refused, for which I don't blame them.

In the meantime this reef remains an orphan structure stuck in the seabed.

Both regional councils should have looked into this type of artificial reef more closely instead of being persuaded by the ASR company from Raglan that their idea and project would work. It's turned out to be a complete disaster and cannot be ignored at all. There must be some way of removing these bags, so I hope this is a good lesson learned by both regional councils of looking before you leap.

*Tom Stephens  
New Plymouth*

## Green Flag Award

Like New Plymouth's Pukekura Park, Hawera's King Edward Park has been an iconic visiting place for tourists.

Now finally after 23 years and for the first time the South Taranaki District Council has put up their park for an award, and they have been internationally recognised with a huge green flag, as well as with a rating from the New Zealand Garden Trust for the years of hard and dedicated work which has gone into this particular park which also has a lot of history. On the other side of town they have Naumai Park which is mainly used for entertainment. I believe congratulations are in order.

Remember, awards like this don't come too readily, although Pukekura Park has picked up its sixth award in a row. Let's keep our province on the map, no matter what it is for, as I do believe our province can match itself against any other province in the country.

*Tom Stephens  
New Plymouth*

## APOLOGY and CORRECTION

In our December 20 report on the Coastal Taranaki School prizegiving on page 3 the Chair of the Board of Trustees was given as John Burmeister. The Chairperson

of the Board of Trustees is Deb Burmeister and the speech was read by John Pullar.

We apologise for this error.

# Increased coal burning shows why we need natural

News that coal-fired electricity generation has reached a five-year high shows why we need to keep exploring for natural gas, says the Petroleum Exploration and Production Association of New Zealand (PEPANZ). "When the lakes are low and natural gas is unavailable, it's coal that keeps the lights on - even though it has twice the emissions of natural gas," says PEPANZ CEO Cameron Madgwick.

natural gas is such a bad move, both economically and environmentally.

"We now have around seven years of natural gas supply left and no plan on what to replace it with, other than burning more coal and importing LNG from overseas. Both of these options will mean higher prices for consumers and higher emissions.

"Vivid Economics estimated last year that replacing natural gas could cost up to \$2,700 per

household per year, or \$52 per week extra in increased costs.

"Solar power will be an important part of the energy mix, but it isn't much help after dark and battery technology is still prohibitively expensive.

"A pragmatic way forward would be for the Government to ask the Climate Change Committee and the Electricity Authority to consider the role of natural gas as part of its work on New Zealand's energy system."

## On this month in history Katherine Mansfield dies

On January 9, 1923 short story writer Katherine Mansfield died in Fontainebleau, France. She died from the lung disease tuberculosis, which was diagnosed in 1917.

in 1888. Much of her writing life was spent in Europe and her first book of short stories was entitled 'In a German Pension'. This was published in 1911.

She spent extended time away from her second

husband John Middleton Murray living in France, Italy and Switzerland in search of a cure.

Her short stories, letters, journals, poetry and book reviews have been translated into 25 languages.



● New Houses ● All Farm Buildings  
● Alterations ● Kitchens  
● Roofing ● Decks

For all your building requirements, contact us today

**HEARTLAND CONSTRUCTION**  
48 Allison Street - Opunake - Taranaki - Phil on 027 236 7129

## Promote your events in the

# OPUNAKE & COASTAL NEWS



**SUSANNE HIPPI ACCOUNTING LIMITED**

Susanne Hipp

If you find yourself spending too much time on administration/ accounting and not enough on what earns you money, it is time to call **Susanne Hipp Accounting.**

Phone: 06 928 5608  
Mobile: 027 610 0270  
191 High Street, Hawera, 4610

[www.shaccounting.co.nz](http://www.shaccounting.co.nz)



**Precision Helicopters Limited**  
Precise in nature, action and performance

0800 246 359  
[www.precisionhelicopters.com](http://www.precisionhelicopters.com)  
[sales@precisionhelicopters.com](mailto:sales@precisionhelicopters.com)

For all your helicopter needs...

- Granular & liquid fertiliser
- Fine particle suspension
- Weed spraying
- Cattle mustering
- Precision lifting
- Hunting & fishing trips
- Scenic flights

**PHL**



Taranaki wide sales, hire and service.  
Free delivery, competitive prices.

**MOBILITY SCOOTERS**  
and all living aids - we'll help you  
with whatever you need.

*Kevin & Marilyn Bromell*  
**154 PRINCES ST - HAWERA**  
Ph: 06 278 8072 - Freephone 0800 765 763  
www.mobilityandmore.co.nz

Guaranteed  
**BEST PRICE IN TARANAKI!** FREE PRINTER ADVICE  
Why pay more to print? Ink + Laser Cartridges

172 Devon Street East, New Plymouth  
Phone: 06 757 4380  
OPEN: Mon - Fri 8:30am - 5pm  
Sat - 10am - 12pm

**Cartridge World**  
www.cartridgeworld.co.nz newplymouth@cartridgeworld.co.nz

*Headstone Warehouse*  
WHERE YOU GO FOR HEADSTONES

33 High Street,  
HAWERA - Ph: 06 278 5518

209 Coronation Ave,  
NEW PLYMOUTH - Ph: 06 759 9975

www.HeadstoneWarehouse.co.nz  
EXCEEDING THE STANDARD SINCE 1914



Dave's available for all farm maintenance digging and all landscaping work.

**S.O.S**  
Specialist Outdoor Services

call 027 605 8437  
31 King Street - Opunake

**MAYOR'S COMMENT**

**An exciting 2019 beckons**

Hello everyone, I hope you all had an enjoyable festive season. I had a great start to the New Year attending the Opunake Beach Carnival. I was very impressed with the organisation of the event which was well supported with a huge crowd enjoying our beautiful beach. There are some exciting projects ahead of us this year and I'm really looking forward to working with you to continue to make positive changes for our district.



STDC MAYOR  
ROSS DUNLOP

One such project being done by the Opunake Lions is to extend the existing coastal walkway with a pathway which creates a loop track around Opunake. I was delighted that the Council was able

to support this project with a grant so it could continue without waiting until the next financial year. This year we are also going to work on developing town centre strategies for Opunake, Manaia, Eltham, Patea and Waverley. We started this process a few years ago in

Hawera, which has led to some of the revitalisation projects underway in the town, and we want to look at developing similar plans for all our towns. With community consultation, the idea would be to come up with a plan of how we want our towns to look in the future. This could include deciding on how our CBDs could be enhanced and thinking about future developments, such as residential subdivisions, heritage buildings, etc. Keep an eye out in the coming months for more information about this work as we want as much community input as possible. On quite a different topic, as I am writing this column we

are being warned about a heatwave which is going to hit New Zealand. Such hot weather will certainly put pressure on our district's water supplies so please use water wisely and prevent waste where possible so that we can get through without having to introduce restrictions. If you're on a farm keep an eye on your meter flow - check and fix any leaks. In town, don't water gardens in the heat of the day, do it in the evenings and use brooms and brushes to wash things like cars/driveways down.

Ross Dunlop

Mayor

South Taranaki District.

**Duo to lead Govett-Brewster**

NPDC has appointed Aileen Burns and Johan Lundh as co-directors of the Govett-Brewster Art Gallery/Len Lye Centre. The announcement follows a six-month global search.

Burns and Lundh are currently executive directors of the Institute of Modern Art (IMA) in Brisbane, Australia and formerly co-directors of the Centre for Contemporary Art (CCA) in Londonderry/Derry, Northern Ireland. They will start in the role in March.

NPDC Chief Operating Officer Kelvin Wright said: "We're delighted to appoint this dynamic duo with proven international experience to work with our local community on the gallery's next chapter. It's an important part of our economy contributing about \$7 million each year and I know Monica Brewster, the courageous founder who took a punt to fund a contemporary art gallery in New Plymouth in the 1970s, would be proud of this equally innovative and bold leadership approach," says Wright. Taranaki Iwi CEO, and interview panellist, Wharehoka Wano, said: "Aileen and Johan bring with them experiences from their previous roles in Londonderry/Derry, Northern Ireland and



Aileen Burns and Johan Lundh.

Brisbane, Queensland, including working closely with aboriginal communities to add the indigenous voice and stories from those communities to the contemporary gallery setting. Between them they add a high level creative and technical skill set that is required in this new role and an energy which is well suited to the Govett-

Brewster Art Gallery and Len Lye Centre."

Burns and Lundh are excited about the role.

"We are honoured to take up the Directorship of the Govett-Brewster Art Gallery/Len Lye Centre. We have followed its programme for many years and been impressed with this ambitious organisation. We share a passion for the artist-centred spirit of the Govett-Brewster and look forward to furthering its development, achievements and reputation," the co-directors said. "It will be a great pleasure to lead it to its 50th year in 2020 as we celebrate its past and plan for its bold future. We look forward to working closely with the staff and city team, foundations, partners and stakeholders to keep art at the centre of civic life for

the local community and visitors."

Aileen Burns holds an MA in Modern Art from Columbia University, New York, and a BA with Honours in Art History and Cinema from the University of Toronto, Canada. Johan Lundh holds an MA and BA from Konstfack University, Stockholm, Sweden. They have written extensively, curated and produced exhibitions, artist projects and programmes globally.

The Govett-Brewster Art Gallery/Len Lye Centre is owned and operated by the New Plymouth District Council, which governs the museum under the terms of the founding Monica Brewster Trust Deed, in association with the Len Lye Foundation.

**4U Computer Solutions**  
Affordable | Dependable | Professional  
If experience and service is important to you, then 4U Computer Solutions is the service provider for you

- Managed Services
- Hardware & Software
- Phone System
- Test & Tag
- Backup Solutions
- Support

We Service:  
Hawera, Eltham, Stratford, Patea, Waverley, Manaia, Opunake and Kaponga

Call Us: 0800 48 2667 or 06 278 1224 | 191 High St, Hawera  
www.4ucomputersolutions.co.nz

# Major pole upgrade for Coastal Taranaki



Powerco staff replacing poles at Oeo.

Electricity distributor Powerco has been working on a major pole replacement programme south of Opunake that will strengthen its supply network there, particularly during storms. More than 300 new poles will be installed in the \$1.2million project which covers a total of about 28km along SH 45 and along Oeo Rd.

General Manager of Service Delivery and Systems Operations, Ian Skipworth, said 70 poles on the upper section of Oeo Rd were already up in December and the other work would be completed in the first three months of next year. "Many of the old poles have deteriorated over the years because of their proximity to the sea," he said. "The concrete has become brittle through the combined effects of corrosion and weathering. That has made them susceptible in storms and high winds." Work planned for this year would be completed in three stages to help minimize disruption to people along the route. "Two local contractors,

Obertech and Linepower, will share the work. They will have as many crewmen as possible on site to complete the job as quickly as possible during any planned outages." "Stage one involves erecting about 100 poles from just south of Opunake to Patiki Rd at Pihama with stage two from Patiki to Oeo Rd. The final section is up Oeo Rd to the end point of the just completed work." Other equipment on the line, including switches, transformers and conductor, would be inspected during the pole replacement.

More work was planned in the area during the remainder of 2019 as part of the five-year, \$1.27 billion upgrade of its North Island network.

## Creating a sense of community for those with Parkinson's

One in every 500 New Zealanders has Parkinson's disease. Although a large number are aged over 65, the average age of diagnosis is 59, and many are diagnosed with it in their 30s and 40s, according to Parkinson's New Zealand. Parkinson's is a progressive neurological condition that occurs when insufficient quantities of the chemical dopamine are produced by the brain.

Parkinson's Taranaki has 268 members.

"Taranaki has a very dedicated and passionate Action Group," says Stevie Geeks of Parkinson's NZ. "Our Action Groups are volunteers who create a sense of community within

their local areas. People with Parkinson's may struggle with apathy and depression, so the work our Action Groups do to keep the Parkinson's community active and engaged is integral to the service Parkinson's New Zealand provides.

"For the most part the public's knowledge of Parkinson's is limited to "a shaky hand," it's so much more than that."

The main motor symptoms of Parkinson's include a tremor, stiffness and rigidity, slowness of movement, as well as anxiety, poor balance, altered speech and changes in mood.

At the last Egmont Plains Community Board meeting for 2018, Bev Pranker made the case for funding from the board's discretionary fund to help pay for a South Taranaki Parkinson's Community Educator.

The educator gives help in the form of home visits, support groups, making referrals, advice, advocacy, social activities, and organising exercise classes, educational seminars and whanau meetings.

Bev Pranker said their aim is to visit every person living with Parkinson's. They would also educate the carer in how to look after somebody with

Parkinson's.

"It's very important these people are looked after and the carer is looked after. If you don't look after them you have two people who aren't helped," Bev told the Community Board. "If we don't look after our locals and they have to leave the area, then a lot of local knowledge is lost."

In deciding whether to make a grant from the discretionary fund, reservations were expressed about the board funding a salary and the application was declined.

**\*HEADSTONES \* GRANITE PLAQUES  
\*CERAMIC PHOTOS & PLAQUES**

**STONE CREATIONS NZ** 

stonecreationsnz@gmail.com  
www.stonecreationsnz@kiwi.nz

0508 763 84 37  
Forever Memories Your Way

Creative Centre & Showroom  
25 Upper Pitone rd  
off Surf Hi way 45 - New Plymouth

**SHOE & BOOT SALE**

by **SCARPAS** David Deacon

Girls and Boys School Shoes & Sandals available now

Also  
**SHOE, BAG & LEATHER REPAIRS**  
244 Broadway - STRATFORD  
Ph (06) 765 5591 - Fax (06) 765 5594

**Stepping Stones**

**Early Childhood Education Centre**

We are now taking Enrolments for 2019. Don't delay as we have limited spaces.

Please ring Gloria: 06 752 4289 or 027 463 4644  
2502 Surf Highway 45, RD37, Okato  
SESSION TIMES 8.30AM - 3PM

**LAWYERS**

**OPUNAKE LAWYERS**

**Thomson O'Neil & Co.**

Our Opunake Office is attended by:

**Robert England on Wednesday & Fridays** for buying and selling houses, farms & businesses; Trusts, Wills and Estates.

**Mark Utting on Thursdays** for buying and selling houses, farms & businesses; Trusts, Wills, Estates and refinancing matters.

**FOR ALL YOUR LEGAL REQUIREMENTS**

**30 TASMAN ST, OPUNAKE**  
**PH: 761 8823**

**CARING FOR YOUR COMMUNITY**



**INGRAM'S** **PHONE (06) 278 4786**

PROUD TO BE LOCALLY OWNED & OPERATED **Bin & Skip Hire**

# Bamboo fire is extinguished swiftly

A roadside fire at Warea was tackled by fire engines from the Okato and Rahotu on Tuesday January 22.

A fire had spread from a small burn-up at a property and a patch of roadside bamboo was set alight. The firefighters soon had the fire under control just before 6pm. Earlier the resident had tried to deal with the fire using buckets of water, but soon realised she needed help. She was most impressed with the efforts of the firefighters whom she described as "amazing."

The situation was under the leadership of Jamie from the Okato Volunteer Fire Brigade. He described the white foam on the smouldering area as Class A fire retardant.



The roadside after a fire swept through a patch of bamboo.



**Craig Dingle, recently appointed Chief Fire Officer of the Opunake Volunteer Fire Brigade**

## A new year for the Opunake Fire Brigade

Monday night was the first night back for the Opunake brigade after the Xmas break. During the time off members were "waving the flag" for the brigade at a number of community events including the Christmas Parade, the Beach Carnival, and the round the

mountain cycle race.

A brigade meeting was held under the new leadership team of Chief Fire Officer Craig Dingle and Deputy Chief Andrew Pentelow to welcome back everyone and to share stories of happenings over the time off. The new leaders focus for this year is ensuring all the brigade members keep all their skill sets current in order to keep themselves, their fellow brigade members and the community safe at all times.

The brigade had a busy 2018 with a total of 80 call outs attended. The 2019 year has started off a bit quiet with only two call outs so far. Both these calls have been medical related. The first call for the year was on January 8 when

the crews were called out to provide lifting assistance for the Ambulance. The second call was on the January 19 when the brigade was called out to provide a landing site for the Rescue Helicopter to pick up a patient for an urgent medical transfer.

The Opunake brigade attends a wide variety of call outs which makes being a member of the brigade both exciting and interesting. The brigade is always looking for new members so if you (or someone you know) would like to join this team come along on Monday nights and check it out.

It was good to see that over the Christmas break a new boundary fence has finally been erected. Thanks go out

to the South Taranaki District Council for their contribution towards the cost of the fence. It certainly makes the station look a lot tidier.

Work is also progressing on getting approval to extend and update the kitchen facilities at the station. Once completed the brigade will have a more user friendly facility for its members.

With the summer conditions now upon us it is important care is taken when using fires in the open. Before lighting a fire in the open area go to [www.checkitsalright.nz](http://www.checkitsalright.nz)

That's all for now  
Take Care

VSO John

## Greater access to services needed to address rural family violence

The Family Violence Act 2018 must protect victims' privacy and accessibility to support services, says Rural Women New Zealand (RWNZ).

"Sharing and disclosing information between government sectors, such as health and education, may place the privacy of family violence victims at risk," says RWNZ National President, Fiona Gower.

"Although RWNZ supports

the Government's efforts to create an effective preventative response to family violence through information sharing, we do not support a system that puts people at risk and leaves victims feeling vulnerable and unable to seek help because they are afraid of confidentiality breaches."

"However, for many rural families, there are no "on the ground agencies" to provide services desperately

needed and this remains our fundamental concern."

"Rural victims of family violence often cannot leave their situations easily and this isolation and lack of support is significant as 39% of rural women will experience violence, compared to 33% of urban women, as cited in our submission on the Family Violence Legislation Bill in July 2017," says Ms Gower.

### D P Plumbing

Craftsman Plumber  
Living locally in Okato

21 years experience

Competitive quotes, prompt service

Phone Duane on  
(06) 752-4897 / 021 023 05 021



### FINER SPRAYING SERVICES LIMITED

• Crop Spraying

• Pasture Spraying

• Facial Eczema

Grant: 027 444 9189  
A/H: 06 278 8451

**BOOM SPRAYING SPECIALIST**  
Accurate Application - Sound Advice



## hear like a young pup again

**CALL US NOW**  
FREEPHONE 0800 751 000

[www.centralaudiology.co.nz](http://www.centralaudiology.co.nz)

Clinics at:  
New Plymouth  
Stratford  
Hawera

**Central Audiology**  
TARANAKI

**100%**  
Taranaki owned  
and operated  
since 1998

## B & R Barron BUILDER

2475 Surf Highway 45 OKATO  
PH/FAX 06 752 4044 MOBILE 0274 448106  
Email: [barronz@xtra.co.nz](mailto:barronz@xtra.co.nz)

- Houses
- Alterations
- Decks
- Bathrooms
- Kitchens
- Roofing
- Fences
- Concrete
- Cowsheds
- Farm Buildings

# Phoenix up from the ashes and operating

The Phoenix is back from the ashes. The mythical Greek bird that emerges from the flames has its Opunake equivalent in Phoenix 45 from which Ali Hayward has been selling fish, chips and burgers since December.

The fire which gutted Fish Chips'n More, the popular Tasman Street eatery back in November has not kept Ali down. As reported in the Opunake & Coastal News (November 22) Ali and her sister Daphne Holley have bought a food trailer to enable them to continue in business until the shop is up and running once more. They have named their new venture Phoenix 45, alluding to the similarity between themselves and the figure from Greek mythology as well as their connection to Surf Highway 45 where they are based.

On December 14 they started operating out of a site next to the old Opunake courthouse building on Tasman Street.

On Friday evening Ali, Daphne and Ali's daughter



Ali Hayward and her daughter Courtney Crowther serving customers with a smile.

Courtney Crowther were there taking orders and dishing out the night's dinner to passing customers. On sale were items bearing names appropriate to the town's coastal location, like the Big Kahuna, Hot Sand, High Tide, Low Tide, Malibu, and the Mini Mal for kids.

There were even a couple of bean bags nearby where

customers could make themselves comfortable while their orders were being made up.

"It's been well supported and we enjoy being out in the open air with the sunshine and mountain view and fresh air," says Ali. "And the customers are enjoying the bean bags."

The historic courthouse has also attracted a good deal of

interest with questions being asked by both locals and out-of-towners.

Summer has brought the usual swag of visitors to town and campers are making up a good proportion of the Phoenix clientele.

"People are constantly asking when the shop operating and that will happen one day," says Daphne.

**PHOENIX 45**  
 RISEN FROM THE ASHES  
 Fish, Chips, Hot Dogs and Burgers  
 App available for regular ordering  
 Download and stop queuing.  
 Open every day from 4.30 to 8pm

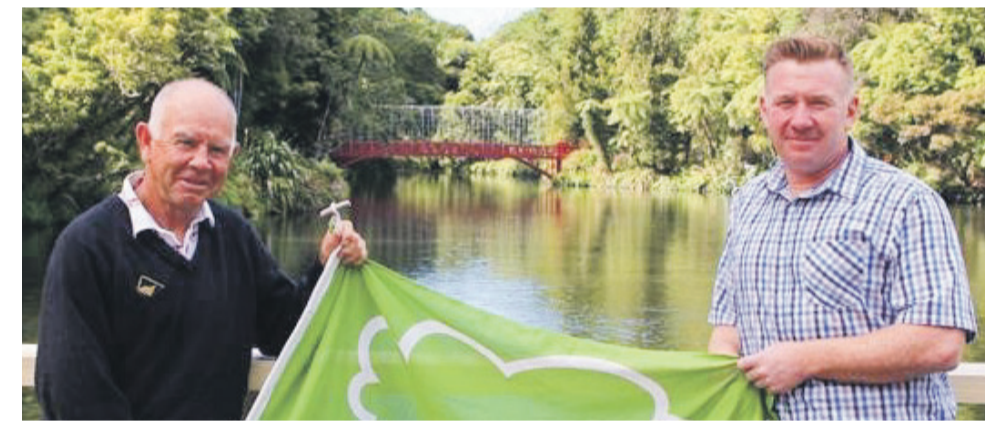
**PHOENIX 45**  
 104 Tasman St,  
 Opunake  
 Ph 021 068 5037

**Steve would like to thank all of his loyal customers and the people of Opunake for their support over the last decade.**

**AGRIMEC AUTO will be changing hands on the 1st February**

**AGRIMEC AUTO LIMITED**  
 38 IHAIA ROAD, OPUNAKE  
 PH: 06 761 8999

## Curator hands over at Pukekura Park



LEFT: Curator Chris Connolly (left) hands over to Kristian Davies.

Kelvin Wright. "We wish him all the best in the future and a happy retirement."

Mr Davies, 42, takes over the reins after spending 15 years in London, where he ran his own landscaping business.

He was keen to get back to a lifestyle that embraced his love of surfing, fishing and hiking – and New Plymouth ticked all the boxes.

He previously worked at the Auckland regional botanic gardens, where he developed an expertise in camellias, magnolias and Asiatic plants.

"I love the history of Pukekura Park. It has a great team. It's a fantastic conservation asset and seed bank. I'll be looking to carry on the vision and keep the Green Flag flying."

The job of keeping the international Green Flag flying over NPDC's Pukekura Park is changing hands. Curator Chris Connolly is retiring and passing the banner to newly-returned Kiwi expat Kristian Davies.

Mr Connolly says he's had a "fantastic" 12 years at the helm of the jewel in the New Plymouth's crown.

"Managing NPDC's Pukekura Park has been an absolute privilege. New Plymouth's founders had

great foresight to create such a fantastic and lasting asset back in 1876. It's nationally significant," says Mr Connolly.

Among his achievements, he has built on Pukekura's reputation by helping to establish WOMAD as an annual fixture at Brooklands Park and supporting the development and success of the TSB Festival of Lights.

For the last six years, Pukekura Park has earned a Green Flag, the international

award for the world's best parks and green spaces.

The keen surfer now plans to spend more time with his family, including two young grandchildren, and at some of his favourite breaks, such as Waiwhakaiho, the Kumara Patch, Back Beach and Graveyards.

"NPDC would like to thank Chris for his hard work and the great job he has done looking after and improving Pukekura Park," says NPDC Chief Operating Officer

**Promote your events in the OPUNAKE & COASTAL NEWS**

**NEW INDEPENDENT FARM SUPPLIES STORE OPENED**

**Eltham Timber & Supplies**

Locally owned and operated, we are a revamped business, that started nearly 40 years ago.

We have a no frills, can do, will do approach! If we don't have it we can get it! Along with great customer service! WE ARE EXPANDING THE SCOPE OF OUR BUSINESS TO PROVIDE YOU WITH:

- DOMESTIC TIMBER SUPPLIES
- FARM TIMBER AND POST SUPPLIES
- GENERAL FARM AND COWSHED SUPPLIES
- DRYSTOCK FARMER REQUIREMENTS
- PET FOOD AND SOME HOUSE HOLD PRODUCTS
- ALL YOUR DIY NEEDS
- POLE BARNs, REPAIRS AND MAINTENANCE

For us to provide you with the best possible range and service let us know what your requirements are, come in and see as at: 143 Bridge Street Eltham

Phone:  
 New Store - Bridge Street 06 764 7003/027 764 7002  
 Current store and Timber yard -  
 25 North Street 06 764 7004/027 764 7004  
 Joe Menzies - CEO 0273853251

**HEL** Specialists in on farm installations and repairs

..... make the connection

**HEL Electrical Services Ltd**

For quality advice and service  
**Ph: 0800 200 210**  
 E: info@helectricalservices.co.nz  
 New Plymouth - Inglewood - Okato  
 Ph: 06 756 7529

**IHAIA MOTORS**  
 for  
**A GRADE REPAIRS**

- Tyres
- Lubes
- Panel beating
- Farm Bikes
- All mechanical repairs
- Insurance work
- Radar Detectors
- Batteries
- W.O.F
- Painting
- LPG

**AT COMPETITIVE PRICES.**  
 Tasman St, Opunake  
 Ph (06) 761-8502

**ALUMINIUM JOINERY**

**Rylock**

- Windows
- Bi-Folds
- Sliding Doors
- Entrance Doors
- Conservatories
- Garage Doors
- Inserts/Retro Fitting

Call today for a free measure and quote

IN YOUR AREA EVERY WEEK.  
**Ph: (06) 758 8073**  
 Fax (06) 758 4157  
 Email: sales@rylocknp.co.nz  
 Web: www.rylock.co.nz

# Global concerns reflected in our nation

With the first month of 2019 over, I have been contemplating how global concerns are reflected in our own backyard.

This year I again had the privilege of leading a group of MPs to the 27th Asia Pacific Parliamentary Forum (APPF) in Siem Reap, Cambodia. The APPF is an annual opportunity for parliamentarians from 27 countries to come together and search out solutions to political, security, economic,



**JONATHAN YOUNG MP FOR NEW PLYMOUTH**

and social issues. Democracy is under

pressure in a number of areas in Asia. However, it is good news that Malaysia are seeking to do some electoral reforms that will strengthen democracy in their country. Before going to Cambodia, I spent about four days in Malaysia and met with a number of their MPs, and the Speaker of their National Assembly and the Chair of the Electoral reform committee. We compared notes about what is happening in New Zealand and what has been

Malaysia's history and now their aspiration in reforming their political environment.

The Asia Pacific region faces a broad range of challenges, and the APPF forum is a chance to come together and focus on promoting expansion of trade and investment, sound and sustainable environmental practices, and the advancement of freedom and democracy. Discussions and resolutions included regional security and conflict prevention,

economic integration and the empowerment of women and girls.

A number of those challenges are directly reflected in what we face in Taranaki. We are an exporting province which keeps a close eye on environmentalism. Alongside that, we aspire to give everyone a fair go regardless of race, gender and background. The APPF offered some context and perspective on that and I hope to use those insights for the

benefit of local people this year and beyond.

Taranaki has a history of innovation and strong character. As we accept, consider and integrate different perspectives we become better equipped to deal with the evolving questions of the 21st century

*Jonathan Young*

*Member of Parliament for New Plymouth*

**JONATHAN YOUNG**  
MP FOR NEW PLYMOUTH



06 759 1363  
newplymouthmp@parliament.govt.nz  
www.jonathan.young.co.nz  
@MPjonathanyoung

Authorised by Jonathan Young MP • Corner of Gill & Lizardet Street • NP

## Record investment in low emissions vehicles announced

Low emission transport will receive a record boost totalling more than \$11 million, Energy and Resources Minister Megan Woods has announced.

"I'm announcing the largest round of new funding from the Government's Low Emission Vehicles Contestable Fund yet.

"Thirty one exciting new low emissions transport projects will share over \$11 million of funding to help more Kiwis make use of new transport technology.

"This funding is made up of \$4.3 million of government co-funding and \$7.3 million of funds from the private

sector. That's a smart investment that means the maximum benefit for the taxpayers spend.

"This round of funding focuses on innovative projects that expand the use and possibilities of electric vehicles and other low emissions technology in the transport space. It's about making new technology available to help Kiwis get around, lower our carbon emissions and contribute to our economy.

"From 100% electric campervans for tourists to hydrogen fuel cell powered buses at the Ports of Auckland to solar panel charged

electric vehicles and trial of smart chargers in people's homes, we're backing new technologies that will make a difference.

"We're also funding a further 34 new public charging spaces for electric vehicles right around New Zealand, including several at South Island tourism hot-spots. This is about creating a truly national infrastructure of EV charging so that all major trips around our country are available to EV users.

"This is by far the biggest round of new projects delivered by the Fund. Each previous round has given the green light to between 14 and

18 projects. In total, the fund has committed \$17.2 million in government funding to 93 projects. This is matched by over \$45 million applicant funding.

"Transport is responsible for about 18% of New Zealand's total greenhouse gas emissions, so one of the most effective ways for us to help tackle climate change is to transition our fossil-fuelled transport fleet to run on clean, renewable energy sources.

By helping to roll out that technology to more people than ever, it helps more Kiwis cut their transport emissions.

**LOVE YOUR HEARING**

*Lisa Keen Audiology  
Opunake's Hearing Pro*

...because what happens next is the best sound in the world  
**#SweetSpot**

Call 0800 555 676 today to up your game

Wednesdays by appointment at Coastal Care  
Opunake, 26 Napier Street | www.keenaudiology.nz



**SEND US YOUR SPORTS STORIES AND PHOTOS!**



**OPUNAKE & COASTAL NEWS**

**Promote your business or event in our area, call us on:**

Ph/Fax: 06 761 7016 - 23 Napier Street, Opunake  
or e-mail us: ads@opunakecoastalnews.co.nz

### On this month in history Sir Isaac Newton born

On January 4, 1643 the scientific genius Isaac Newton was born in England (Gregorian calendar). By his mid 20s he had formulated

his Three Laws of motion and his theory of gravitation, invented calculus and discovered the spectrum of light. He changed the

way people understood the universe and Earth in terms of physical laws.

He died in 1727 aged 84.

**FORKLIFTS | CONSTRUCTION EQUIPMENT**



- RENTAL
- SERVICE
- PARTS
- NEW & USED SALES

**AGENTS FOR NILFISK FLOORCARE PRODUCTS**

**AB EQUIPMENT**  
31 Hurlstone Drive, New Plymouth  
Richard Walker - Sales Specialist  
Ph (06) 757 5197 or 0800 30 30 90  
www.abequipment.co.nz



# Extra boost for rural road safety

Associate Transport Minister Julie Anne Genter has announced an extension of the Government's Safety Boost Programme to prevent deaths and serious injuries on rural New Zealand roads. The NZ Transport Agency will be investing \$20 million to upgrade 670 kilometres of rural State highways across Gisborne and Hawke's Bay, Manawatu-Wanganui and the West Coast this year.



Julie Anne Genter MP

"The Boost Programme

will target 11 rural State highways that might not have high levels of traffic but still have plenty of risks like sharp corners and narrow stretches," said Julie Anne Genter.

"The Boost Programme includes simple safety upgrades that can be installed quickly over the summer period, such as rumble strips roadside safety barriers in high-risk locations, shoulder

widening, and improved signage.

"All drivers make mistakes from time to time. Safety improvements like these stop simple mistakes turning into tragedies.

"Rumble strips can reduce fatal run-off-road crashes by up to 42%. Shoulder widening at high risk sights can reduce serious crashes by up to 35%.

"The original Safety

Boost Programme made improvements like these in Northland, Taranaki, Manawatu-Wanganui, Otago and Southland. It delivered almost 2000kms of rumble strips, 30km of road safety barriers in higher risk areas, and intersection speed zones at high-risk rural intersections," said Julie Anne Genter.

This summer's Safety Boost is part of the \$1.4 billion Safe

Network Programme (SNP) - a collaborative, prioritised programme of proven safety improvements on high risk routes across New Zealand.

The 670 kilometres of road upgrades in the Boost Programme is additional to the 870 kilometres of upgrades to high volume high-risk State Highways in the SNP.

# Volunteers keep concert waste out of landfill



Volunteers do their bit for the environment.

An army of Zero Waste warriors and a great response from concert-goers helped NPDC keep 95% of waste out of landfill after Toto, Jefferson Starship and Dragon played at the TSB Bowl of Brooklands concert.

A crowd of 8,500 were at the concert. As part of the Toitapu Toiora Taranaki Green Initiative, new recycling and waste stations were rolled out across the Bowl and volunteers were on hand to help concert-goers go green. Just six wheelie bins of rubbish had to go to landfill with the rest of the 35

cubic metres of waste either recycled or composted.

"To keep 95% of waste out of the landfill is an amazing result," says NPDC Chief Operating Officer Kelvin Wright. "We'd like to thank the army of volunteers who did an awesome job on the night and the next day. It's this kind of can-do attitude which will help our journey to Zero Waste 2040."

Volunteers included members of Taranaki Conservationists and Pare Kore who worked late into Friday night and the next morning to pick up any waste

concert-goers left behind.

As well as the new recycling and waste stations, it's estimated that up to 5,500 single-use cups were kept out of landfill by the use of NZ-made Globelets. Food vendors also switched to compostable materials.

The Toitapu Toiora Taranaki Green Initiative will feature at other Bowl concerts such as The Hollies on March 1 and Angus and Julia Stone on March 31 and will soon be available for hire at other community events.

## CRAWFORD

**AGRITECH Ltd**

- ▮ TRACTOR & MACHINERY SERVICE & REPAIRS
- ▮ ON FARM SERVICING
- ▮ AIR CONDITIONING SERVICE, REPAIRS AND HOSE MAKING
- ▮ SPARE PARTS & FARM OILS
- ▮ IMPLEMENTS & ATTACHMENTS - SALES AND SERVICE
- ▮ FACTORY TRAINED TECHNICIAN
- ▮ TARANAKI & WANGANUI INDEPENDENT FERGIE TRACTOR SPECIALISTS

**Ph 06 762 8023**

**Ian Crawford**

**Mob 0272 207 701**

---

MASSEY FERGUSON | FORD | SAME | LANDINI | ISEKI | VALTRA | MATBRO  
INTERNATIONAL | MERLO | DAVID BROWN | RENAULT | URSUS | JOHN DEERE

**MORRIS**  
LUBRICANTS

the winning formula since 1869

We don't just snap-chill your milk. We're also freezing our interest rates at 0% on any purchase of a DeLaval chiller for the next 24 months. This is a deal that will be hard to beat. Visit your local DeLaval dealer to put the best chiller on the market, onto your farm.

Since you have to do it  
You may as well do it right

## COASTAL AGRI SERVICES

Tasman St, Opunake - Ph (06) 761 7079  
24 HOUR SERVICE - 7 DAYS A WEEK

## POWERWORX

Power Supply Rural & Residential

Design, upgrade and repair overhead and underground power supplies

- Powerco Approved
- Underbores - wires and pipes
- Powerline maintenance
- Fault repair
- Subdivision power installation
- Vegetation control around powerlines
- Network connections
- Transformer & line upgrades
- Specialists in rural power servicing and installation

**0800 877 746**

Taranaki Region  
Contact Bruce Wilson Manager  
58 Glover Road, Hawera Ph: 06 278 4514  
Email: [powerworx@obertech.co.nz](mailto:powerworx@obertech.co.nz)

Our next issue is due out February 14.  
Call us on 06 761 7016 to be in it.

# Remember to clean, cook, and chill

New Zealand Food Safety (NZFS)'s summer food safety campaign focuses on preventing people getting food poisoning by doing

three simple things: Clean, Cook, Chill. Head of New Zealand Food Safety, Bryan Wilson says foodborne illness

strikes about 200,000 New Zealanders every year with around half of those cases occurring in the home and Campylobacter is the most

common cause. "Campylobacter bacteria occurs naturally in the gut of animals and birds, especially chickens. It can easily be spread around the kitchen from raw meat to surfaces and other foods, and it can make you very sick unless you use good food safety practices.

"The risk is greater in the summer months as the bacteria grows faster in the warmer weather. To avoid getting sick during the summer months, we want everyone to remember the three Cs: Clean, Cook, Chill."

Before you prepare food and after handling raw meat: Wash hands, chopping boards, dishes, and utensils (like knives) in hot soapy water to kill bacteria and stop cross contamination between raw and cooked food. Dry properly, preferably air dry and not with a towel.

Cook food (especially chicken and mince) thoroughly all the way through until the juices run clear. If in doubt, cook it a little longer.

Reheat until hot. (Warm does not kill bacteria. Hot does.)

To stop bacteria growing in

your food don't leave food out. Refrigerate cooked meat ASAP (within two hours) to stop bacteria multiplying. If in doubt - throw it out.

Separate and cover cooked and raw meat in the fridge

Store raw chicken and parts below ready-to-eat food in the refrigerator.

"Another tip is that you shouldn't wash raw poultry as this helps spread Campylobacter to the hands, clothes, other food, and contact surfaces. So no washing that Christmas turkey. Have a safe and happy holiday," says Mr Wilson.

## Tintin, Captain Haddock and Snowy in Wiremu Road



Coastal Taranaki artist Graham Kirk says he has long liked the popular cartoon character Tintin.

"I've always been a fan of Tintin since he first arrived at Harold Jones's bookshop in Hawera in about 1960," he says. "King Ottaker's Sceptre was my first Tintin acquisition. I've done a number of Tintin paintings in New Zealand settings since then."

Tintin, Captain Haddock and Snowy in Wiremu Road is his latest. See Graham's website [grahamkirk.com](http://grahamkirk.com).

## Cautious optimism on migrant workers

Rural Women New Zealand (RWNZ) say they have welcome the announcement by Immigration Minister Iain Lees-Galloway of proposed changes to employer-assisted temporary work visas.

"The acute shortage of farm workers has resulted in a reliance on migrant workers, however any proposals must address the impact on migrant families including access to affordable health,

accommodation, education and support services," said National President Fiona Gower.

"The introduction of regional skills shortage lists, along with new incentives and support for employers, will go some way to alleviating the chronic lack of rural workers throughout New Zealand.

"It is vital that any changes to the employer-assisted work visa programme include reinstatement of

the right for temporary migrant workers to bring their partners and dependent children with them for the duration of their visa period and provide for their safety and wellbeing once they arrive.

"It is essential that all migrant farm workers and their families have access to the same amenities and services afforded to all New Zealanders," says Ms Gower.

## Big Dig brings big rewards



Winners of the Opunake Beach Carnival Big Dig with their bikes from Collins Sports Centre with Mike Starsmore (Opunake Lions) and The Big Dig sponsor Rusty Campbell.

ALL THE BEST FOR THE NEW YEAR, FROM



Cabinet Making, Glass Supplies & Custom Joinery Solutions

Donald & Ian Murray

06 764 8616 027 242 8379  
027 348 9445

136 High Street, Eltham  
[eltham.bs@gmail.com](mailto:eltham.bs@gmail.com)  
[www.elthambuildingsuppliers.co.nz](http://www.elthambuildingsuppliers.co.nz)

## Engineering Services

Contact Ian to discuss your project

Ph: 06 759 5040 | [Ian.Steele@btw.nz](mailto:Ian.Steele@btw.nz) | [www.btw.nz](http://www.btw.nz)



**btw company**  
surveyors . planners . engineers . land & g-i-s services

Proud to be local - BTW since 1973



**HAWERA KITCHENS.**  
**THE KITCHEN BROTHERS.**

Contact Klint or Lance  
24 Glover Rd, Hawera | 06 278 7044  
[info@hawerakitchens.co.nz](mailto:info@hawerakitchens.co.nz)

# Driving on the first week that school is back

Students are back at school this week and next so Roadsafes Taranaki is urging parents, students and motorists to work together to create a safe enjoyable start to the school year.

With the amazing summer we have had, most children within 3 km of school should have no issues walking or cycling to school. Parents need to discuss safe options

with their children and remind them to stay alert and think safety on their way to school. If parents don't feel safe allowing their children to walk or cycle, then go with them for the first week or so to provide support, identify possible pinch points (and provide a safe solution to the problem), and catch some fresh air and the chance to check out their neighbourhood. If you

have to take your children to school by car then parents are encouraged to be part of the solution to reduce congestion by parking well away from the school gates and walk with their child to school. Lead by example and if you need to cross the road, use the correct crossing points.

Road Safety Coordinator Marion Webby recommends

drivers allow extra travel time and watch for children making their way to school.

To create a safe environment for students drivers should slow down in school zones (it's not about the posted speed it's about driving to the conditions). Do not stop in bus parks or on cycle lanes (and the "I'll only be 30 seconds" excuse is not acceptable). Remember children will

be on the roads between 7-9am and 2.30-5pm. Avoid distractions, especially mobile devices. Double check at intersections and crossing points. Slow down to 20 km/hr when passing a stopped school bus dropping off or picking up students. It does not matter what side of the road you are on, drivers in both directions must slow down. Be aware there is no excuse for aggressive

or unsafe driving around schools.

When dropping off or picking up children from the bus stop, parents should not park on the opposite side of the road. If there is no choice, it is recommended to park the vehicle safely and parents meet their child as they get off the bus so they can escort them safely across the road.

# Sharing ideas on making roads safer

Taranaki school students have provided some valuable insights into safety issues on their road and what they think could be done to improve it.

The NZ Transport Agency is looking at ways to make the stretch of SH3 between New Plymouth and Hawera safer. Following community drop-in sessions to canvas public opinion, nearby schools were invited to complete worksheets to gauge student views.

Six schools took part at the end of last year, with more than 100 students sharing their concerns and ideas for making the road safer.

The Transport Agency Transport Systems Manager Ross I'Anson says the students' views will help the project team develop

the most appropriate safety solutions for the road.

"This route cuts through a number of towns and increases in traffic over recent years have made it more difficult for locals to move safely and easily around their towns. Making it safer for pedestrians and cyclists in these communities is a big priority for this project, so we were keen to understand what issues students faced when travelling to and from school. We're very grateful to Ngaere, Eltham, Mangorei, Egmont Village, Inglewood and Normanby schools for taking part in the activity."

"Some strong themes came through in the feedback with many students saying they were concerned about vehicles travelling too fast



Students come to party when it comes to ideas for road safety.

near their school and that they felt unsafe crossing the highway to get to school. Many suggested lowering the speed limit outside their school and building

pedestrian overbridges, underpasses and crossings."

Students also wanted to see signage warning drivers to watch out for children and they urged drivers to

pay attention and slow down when travelling past their school.

"We also received some more unconventional ideas for making the road safer, such as installing machines that deactivate mobile phones near schools to stop people texting and driving," says Mr I'Anson.

The Transport Agency is currently developing safety improvement options for the road and expects to be able to go back to the community with proposals in the first half of 2019. This project is part of the Safe Network Programme, which is a collaborative, prioritised programme of proven safety treatments on high risk routes across New Zealand.

Safety improvements could

include: installing safety barriers on the roadside and down the middle of the road to stop motorists and motorcyclists running off the road and crashing head on, widening the centreline to reduce head-on collisions, making improvements to intersections so it's safer to turn, creating safe places for pedestrians and cyclists to cross the highway, improving signage, or making changes to passing lanes.

"We're very grateful to Ngaere, Eltham, Mangorei, Egmont Village, Inglewood and Normanby schools for taking part in the activity."

# BACK TO SCHOOL

HELP MAKE 2019 A SAFE YEAR FOR OUR CHILDREN

ROAD PATROLS HELP KEEP OUR CHILDREN SAFE

BE PATIENT AT PATROLLED CROSSINGS

CHILDREN ARE UNPREDICTABLE

SLOW DOWN AROUND SCHOOLS AND EXPECT THE UNEXPECTED

NEVER

DRIVERS MUST SLOW DOWN TO 20KMPH WHEN PASSING SCHOOL BUSES DROPPING OFF CHILDREN

SCHOOL BUS

CALL A CHILD FROM ACROSS THE ROAD

Roadsafe  
TARANAKI

0800 111 323

# Strong turnout for Jersey competition

There were over 40 quality cows presented before judge Andrew MacBeth of Timandra Jerseys Hamilton at the on-farm James and Son Competition of the Taranaki Purebred Jersey Club on January 10.

Muggeridge. Truday Izak's Viva. 2. Ross and Sue Johnson. Hasty Spring VV Larisa. 3. Paul and Christine Vanner. Loch Raven Busta Ramona.

Three year-old heifers. 1. Ross and Sue Johnson. Hasty Spring Koop Sasha. 2. Lyndon and Amy Muggeridge Truday Bounty Norma. 3. Paul and Christine Vanner. Loch Raven Gov Darcy.

Four year and Five year old cows. 1. Paul and Christine Vanner. Loch Raven Charlie May. 2. Lyndon and Amy

Muggeridge. Golden Oak Bacon's Paua. 3. Paul and Christine Vanner. Loch Raven BJ Dallis.

Six year and Seven year-olds. 1. Lynda and Amy Muggeridge. Truday Futures Silina. 2. Paul and Christine Vanner. Loch Raven Char Sarah. 3. Graeme Dick and Nola Johnson. Hasty River Lyn Rella.

Eight year olds and over. 1. Lyndon and Amy Muggeridge. Beledene Mario Lassie. 2. Lyndon and Amy Muggeridge. Allandale Brook's Tessa. 3. Ross and

Sue Johnson. Hasty River Dream Missy.

Best udder cow. Lyndon and Amy Muggeridge. Truday Future's Silina.

Champion cow. Lyndon and Amy Muggeridge. Truday Future's Silikna.

Open Class. 1. Lyndon and Amy Muggeridge. 2. Graeme Dick and Nola Johnson. Hasty River Snow Jane. 3. Ross and Sue Johnson. Beledene Squire's Idelia.

Junior members. 1. Linda Morgan. Beledene Mon's Verena. 2. Ross Morgan.

Beledene Mon's Bettina. 3. Linda Morgan. Linmore BB Loveheart.

Yearling heifers. 1. Paul and Christine Vanner. Loch Raven Mav Daphney. 2. Paul and Christine Vanner. Beledene Mon's Starshine. 3. Linda Morgan. Beledene Mon's Verena.

Heifer calf. 1. Paul and Christine Vanner. Loch Raven Tbone May. 2. Lyndon and Amy Muggeridge. Silverstone Volcom's Cassie. 3. Lyndon and Amy Muggeridge. Silverstone Tequila's Nell.

Bull calf. 1. Paul and Christine Vanner. Loch Raven Val Rodger. 2. Lyndon and Amy Muggeridge. Silverstone Idaho Lenny. 3. Craig Morgan. Glamorgan Boss. Ravensdown Dry Stock Champion. Paul and Christine Vanner. Loch Raven Mav Daphney.

Most successful exhibitor Lyndon and Amy Muggeridge. Silverstone Jerseys.

Allan Jenkins.

# December rain dump for Te Kiri

Rainfall for December ranged between 54 % and 178 % of normal, with an average of 95 % for the region according to Taranaki

Regional Council(TRC) figures. Seven sites recorded above normal rainfall by up to 178 %, mostly due to thunderstorm events

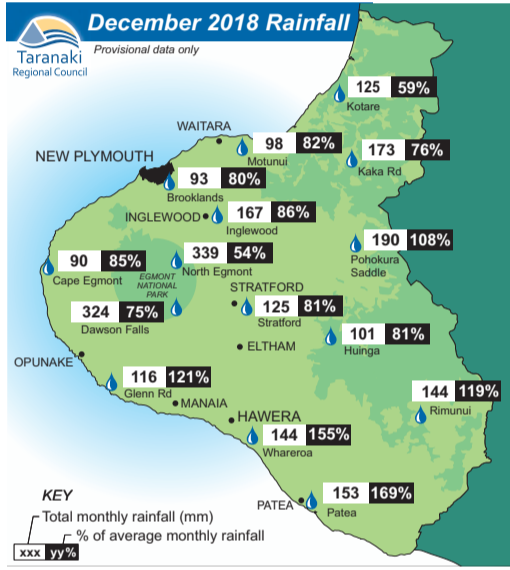
that occurred around the middle of the month. These sites were Te Kiri (178 %), Manaia (121 %), Duffys Farm (155 %), Patea (169 %), Charlie's Clearing (139 %) and Ngutuwera (132 %). One of these thunderstorm events saw Te Kiri record 29.5mm in one hour (which

is the fourth highest hourly rainfall on record for the site) and 42.5 mm in 90 minutes. Te Kiri recorded 225.0 mm for December, which is the highest recorded December rainfall for the site, with the previous December maximum being 209.0 mm (recorded in 2011).

Rainfall for the year ranged

between 84 % and 130 % of normal, with an average of 106 %. Eight sites recorded below normal rainfall for the year and these sites were North Egmont (84 %), Hillsborough (92 %), Mangati (92 %), Egmont Village (91 %), Everett Park (98 %), Inglewood (99 %), Stony (98 %) and

Cape Egmont (97 %). The Patea and Charlies Clearing rainfall sites both recorded new maximum annual rainfall records for the year with 1298.4 mm and 2160.0 mm respectively. The previous annual maximums, both recorded in 2017 were 1289.6 mm and 2048.0 mm respectfully.



# Taranaki's amazing maize maze

The Taranaki Maize Maze which is operated by the Inglewood Lions Club is open for another season. This is the clubs 18th year to run the event. Since we started we have given back over \$220,000 to the Taranaki community. We are open Saturdays, Sundays and public holidays from 11 am - 5 pm. We also hold extended evening hours on some Saturdays and as the maize season draws to a close we aim to run a Fright Night again. This night is very popular. We also take group bookings outside our opening hours. This can be a great team building exercise and great family

entertainment, and all for a good cause. Every year the design for the maze is different. The maze is still growing, and already reaching up to 8 feet high in some areas. Don't forget to bring a hat and bottle of water as it gets very hot in the maize which takes approximately one hour to find all the sponsors' posts. Keep an eye on our facebook page for dates for late nights and Fright Night.

For further information about the Maize Maze contact Gordon Watson 0274454495

Viv Adamson  
Inglewood Lions



The next issue of the Opunake and Coastal News will be coming out on February 14,

**Craig Corrigan ELECTRICAL**  
OPUNAKE

- All Cowshed Wiring
- Farm Control Systems
- Domestic Wiring
- Electrical Inspections

No job too big or too small  
Wiring the Coast - 20 years experience  
Ph: Craig on 027 207 7775

**NEED A SHED?**  
"We'll See You Right"

We have extensive experience with over 3000

- \* Barns
- \* Implement Sheds
- \* Utility Sheds
- \* Stables
- \* All purpose Farm Sheds

We are fast, efficient and economical.  
Free onsite visit to discuss all your requirements

**STRATFORD**  
75 WARWICK RD, STRATFORD - 765 7800

**POWERLINE FAULTS AND SERVICING**

From a fuse or broken insulator replaced to a complete powerline rebuild  
Call: **TOP OF THE LINE ELECTRICITY SERVICES**

Greg Lewis: 027 453 0326  
Justin Robinson: 027 445 9162

**Powerline Servicing Specialists**  
Free line inspections  
Free advice | Free quotes

# Rahotu School girl wins national robotic title

Riley Pollard (11), who attends Rahotu School, has won the VEX IQ Challenge Robotic New Zealand title, which was held in Palmerston North on December 8, 2018. The 'IQ' refers to her section of the contest which is for primary school students. "I felt really excited. I thought it was awesome," she commented.

She has an even more exciting event ahead; she will head to the United States to contest the world title in Louisville, Kentucky starting on April 27 where she will be representing New Zealand. The event will run for four days and is known as the 'Olympics of Robotics'. It is expected that about 4,000 teams from all over the globe will compete.

Riley jokes, "I'm half robot myself." She refers to the fact that she has bionic ears. From very early childhood she has had a cochlear implant to overcome her hearing disability.

She feels she is on a sort of mission. She wants to interest more girls from the Coast to take part in robotics. "If I do it and talk about it, other girls will hopefully take part," she explains (There is concern that 90% of robotic participants are male). Riley's father Aaron has donated much of his time to tutor students in



Riley Pollard with her award as national robotics champion.

robotics and is already involved in running a club for those interested, which meets in New Plymouth. He and Riley are keen to set up a club locally if enough students are interested. (Phone 027 436 1335).

### What exactly is VEX robotics?

The original intention was to inspire and engage youngsters to use a Science, Technology, Engineering

and Mathematics framework (STEM) to solve challenges. Adults act as mentors and tutors, but the youngsters lead the way. They must design and programme a small robot, carry out tests, handle time management, work out the logistics, keep documentation and even seek sponsorship.

In the competitions (schools, clubs, local, regional and national) a team's robots engage in game-based engineering challenges with other teams. In April each year a new challenge is released so students can spend time designing and refining a robot to enable points to be earned at each event. This

year the challenge was called next level <https://youtu.be/IJL1-JNCLI>

Students try their robots out in Driver Skills challenges where their creation is the only one on the field, Autonomous challenges where the robot is pre-programmed so it can drive itself to seek as many points as possible and in Teamwork challenges where they are teamed randomly with other groups of students and their robots; the idea is to get the highest combined score possible. Success in Team challenges require a great design which is operated optimally using a strategy worked out with another team. A practice is

usually needed before the challenge.. This will happen several times with a different team during the event.

Congratulations Riley, all the best for the World Championships in the United States.

**gibsonplumbing** LTD.

**CERTIFIED**

Plumbing, Gasfitting and Drain Laying

**Plus!** Roofing, Wood Fires and other Heating Solutions

06 761 8757 027 445 7164  
gibson.plumbing@xtra.co.nz

## Keep your animals cool this summer

Summer is a time for farmers to take extra care of their stock, says senior Ag Research scientist Dr Karin Schutz.

"Animal welfare is a major concern for New Zealand farmers during hot summer months," says Dr Schutz..

"Cows will change their behaviour to cope in the warm conditions, including drinking more, eating less, seeking out 'micro-climates' in the shade or close to water, and orienting themselves differently from the sun.

"If you want to keep up production, you need to keep your animals cool. That can mean providing shelter (such as trees), increasing access to drinking water,

reducing walking distances, and preventing stress. If it is really hot, a lot of farmers will use sprinklers at their milking sheds to cool the cows as they wait to be milked.

"Given a choice, however, we have found the cows will seek shade over the sprinklers, and from our research we know the cows can tell the difference between different degrees of shade and will choose shade that protects them more from solar radiation.

"Research shows that when the air temperature reaches 21C and humidity more than 75 per cent, it can affect the cow's behaviour and milk production could decline."

**BRANDERSON HOMES LTD**  
**PRE BUILT HOMES**

**URGENT!**

FARMERS PLEASE COME AND SEE US NOW TO AVOID DISAPPOINTMENT FOR JUNE 1ST 2019

OFFICE LOCATED AT: 37 HAUTAPU RD, CAMBRIDGE TELEPHONE: 07 827 3901  
Email: branderson.homes@xtra.co.nz Web: www.brandersonhomes.co.nz

Please send us an information pack about your Transportable Pre-Built Homes

Name \_\_\_\_\_

Address \_\_\_\_\_

Phone \_\_\_\_\_ Style/Size \_\_\_\_\_

Please mail to: Branderson Homes Ltd, PO Box 434, Cambridge, 3450

**NEED A TROUGH**

Available now – Troughs – inspection pipes – culvert pipes lids – bridge decks – box culverts - Culvert bases – T/Walls manhole lids – custom made products to order

Buy 5 get the 6<sup>th</sup> One **FREE**

While stocks last

06 761 8122 bus

Kuriger Engineering Ltd – 889 Kaweora Road – Opunake

# Childcare with HEART



Opunake  
KINDERGARTEN

Childcare assistance  
for low and middle  
income families.  
20 ECE Hours

## Opunake Kindergarten

Did you know **Opunake Kindergarten** can enrol babies, toddlers and young children from 0-6years old? We support our local coastal community's family's needs!



Come in and visit your Community Kindergarten and learn about our **2** separate, beautiful and unique educational areas for

# Babies and Toddlers

In our **Moana Room** for our youngest children  
AND

# Preschool children

In our **Maunga Room** for our older children

**Our teachers at Opunake Kindergarten deliver quality education and care through many fun and interesting learning activities. Children's learning and progress is reported to parents regularly to support learning at home.**

### ERO Report 2018

*"Children explore through a well-considered range of planned and spontaneous experience linked to goals responsive to their preferences, interests and needs. Literacy, mathematics, science, te ao Māori and creative opportunities progress children's language, knowledge and understandings".*

#### To find out more:

Phone Opunake Kindergarten 06 761 7440  
email [opunakekindy@xtra.co.nz](mailto:opunakekindy@xtra.co.nz) or visit  
us in person at 56 Whitcombe Road, Opunake.  
**Follow our adventures on Facebook**

*"Provision for infants' and toddlers' is based on respectful interactions and responsive care. They are viewed as confident, capable learners and take opportunities to make their own decisions as they follow their interests and rhythms".*

# Zala - unique in so many ways

A shop well worth a visit is Zala at 181 High Street, Eltham. Proprietor Todd Pomare has created stylish shop premises, which offers 'furniture and design' but that only tells a fraction of the story.

When first visiting this unique shop several aspects are apparent. Firstly, every item for sale is placed with aesthetic care in a well-spaced environment. Secondly, the range of merchandise on sale has a range so wide it is remarkable. Thirdly, Todd is a man living a dream of providing goods of impeccable quality at competitive prices. It's not surprising that his clients travel from as far afield as Wellington to view what he has on display. "I love being here," he says.

The word Zala comes from the best-selling novel 'The Girl with the Dragons Tattoo', which was made into a popular film. "I liked the look of the word - it suggests a cool brand," explains Todd.

Here is just a small selection of what Zala has on offer; beds, headboards, sofas, tables, coffee tables, chairs, lamps (and lamp shades), mirrors, cushions, woollen rugs, glassware, kitchenware, pottery, candles, ornaments, toys, walking sticks and clothes,



Todd with one of his sophisticated and exquisite chairs.

in such countries as India, China and Indonesia.

Quite a lot of Todd's business is conducted online via his Facebook. He is flexible as to payment and accepts cash, cheques, eftpos, and layby.

He is happy to deliver free anywhere in Taranaki for items up to a certain size, but with larger items he'll



Todd shows off his Kearosc candles from a Wanganui craftswoman whom he describes as "amazing."



Todd has a wide selection of quality kitchenware.



Come into the exquisite interior of Zala.

such as kimonos and sheer tops. There is also art on sale, including some created by Todd himself.

Some of the merchandise is new and some is second hand, but with quality to the fore (such as an antique oak sideboard). He buys locally but also sources merchandise from overseas

arrange delivery direct from the supplier.

Todd has further initiatives planned for the near future such as developing his already considerable range even further. He is currently expanding his fashion and accessories and has plans for more furniture and giftware. He expects to have his

website available very soon.

He is in the process of stocking a fridge so he can offer a glass of wine or fruit juice to customers as they browse Zala in the relaxed manner he intends.

Todd is keen to cater to every taste. "I'm happy to customise requirements as to such things as shape, style colour and fashion."

Zala is open 10am to 4pm weekdays and from 10am to 3pm on Saturday and Sunday. Visit Facebook.com/zala. Phone 022 064 2885. Make sure you find time to visit Zala for a uniquely stylish shopping experience with friendly expert attention.

Here is just one endorsement of Zala: "Just a beautiful collection of home décor, well set out and friendly/welcoming service."



# ZALA

FURNITURE + DESIGN

181 HIGH STREET ELTHAM | 0220642885 | @zala\_design

**FARMERS - IS IT TIME TO GET YOUR BALE FEEDERS, SILAGE WAGONS & FEEDING EQUIPMENT SERVICED?**

Call us now to book your service

**Coastal Welders** 027 255 8677  
06 752 8138

Email us at [coastalwelders@xtra.co.nz](mailto:coastalwelders@xtra.co.nz)  
WAREA

# Fun and family mark fifth birthday

Goodin Ag has always prided itself on being a family-oriented business, so a Golden Ticket - Family Fun Day seemed the obvious way to celebrate their fifth birthday this season.

"We wanted to say a big thank you to our clients, in a family way" said Mark Goodin who owns the business with wife Sam.

The clients, their workers and families turned up at the Coastal Rugby grounds at Rahotu, and so did the weather in the form of a fine Coastal Taranaki summer afternoon. Goodin Ag's tractors and contracting machinery ringed the playing area, while a host of activities kept everyone entertained. Alongside the usual staples of train rides, gumboot throwing and bouncy castle, there were other

attractions like bouncing a ball into a drum and a strop throwing competition to keep everyone happy. Meanwhile one of Goodin Ag's Irish drivers could be seen introducing a younger visitor to the traditional Irish sport of hurling.

"All these kids are our next generation," says Mark. "It's all about introducing them to the industry. There could be a future truck driver out there."

Mark's parents Tom and Lyn had started Goodin Contracting 35 years ago. Mark had been involved in managing the business with his brother Chris and his sister Jeni Kettlewell before he and Sam bought the plant and equipment and formed the new company Goodin Ag.

Mark has seen both good



Five years young. Sam and Mark Goodin cut the cake.

## LIME

All options available-  
Cart and Spread or  
Direct Dump on Farm

SPREADING  
FBT Dermott  
Ph 0800 432 866

and bad seasons. Last season was terrible, but this one has turned out much better.

"It's really been a good season for everyone," he says. "Grass has been everywhere and supplement has been everywhere. It's been the extreme end of the scale from last year."

At the height of summer when hay and silage make up the core of their business, they employ up to 25 people. They recently acquired two new trucks to help with the workload.

Mark would like to develop the winter side of his business, which includes excavation work and jobs such as laying out tanker tracks and races.

They have a quarry and diggers, which he describes



The team at GoodinAg

as "the biggest drivers for our winter work."

He also sees the hemp

industry as another possibility worth looking at.

"It's an untapped industry

and there are quite a few people interested in it," he says. Many farmers are growing hemp for the seeds from which oil is derived, but he sees the fibre as something worth following up as well. He says there isn't much in the way of processing machinery available in this country.

"I'm looking at building some myself, or possibly importing some from Australia."

With this being the Northern Hemisphere winter, he has five Irish drivers working for him in the summer months, including Alan(Paddy) Keane from Galway. Paddy worked for them last year and liked the experience so much he came back for more.

"The Goodin's have been nice people to work for," he says. "Mark's very good at sharing his knowledge. It's been good to get out here, get the experience and see how they run the farming and contracting side of things."

What he learned about growing kale last year he was able to take back with him to Ireland where he

# Corkill SYSTEMS LTD

Introduces our new...

# CSL Chillboost

An inexpensive and novel device designed for use where milk blend temperatures are marginal or too high to meet the new cooling requirements.

CSL Chillboost is a simple solution to drop the blend temperature of milk in your vat.

CSL Chillboost quickly retrofits to your existing cooling system.

CSL Chillboost is easy to install and user programmable to fine tune your cooling.

Not the answer for everyone but will assist even if other cooling shortcomings exist. Talk to us today about this exciting new product.



NEW PRODUCT!

Contact us

0800 10 7006

www.corkillsystems.co.nz

Continued page 17.

Corkill SYSTEMS LTD  
Specialists in Dairy Automation Solutions



# Tip Top must stay Kiwi

The thought of an 83 year-old New Zealand icon leaving our shores doesn't sit well with dairyfarmer Matthew Herbert.

Tip Top ice cream has been an integral part of every Kiwi summer since it was founded in Wellington in 1936. Now a question mark hangs over its future. Last year Fonterra chairman John Monaghan said the dairy giant was considering selling Tip Top which it has owned since 2001.

This prompted Matthew Herbert to go into bat for iconic New Zealand brand by launching an online Save Tip Top Ice Cream petition.

At first sight he would seem an unusual champion of the national ice cream. Born in Australia, where he worked as a political advisor, he was a latecomer to dairying, and is therefore not someone who grew up with Tip Top.

"Farmers don't always speak up for themselves, so someone has to stand up and say something," he

says.

"Tip Top is a brand that lots of kiwis identify with. It's not just farmers, but people in urban areas, where Tip Top keeps up that connection from the farm gate through to people's freezers."

"We've heard Fonterra for the last five to 10 years speaking about turning milk into high value products. Tip Top does that and does that very profitably. The last thing we would want to see is Tip Top sold overseas and all the profits disappear from Fonterra's balance sheet."

After Matthew and Brad Markham won the Auckland-Hauraki Sharefarmer of the Year competition they shifted to Taranaki to go contract milking near Kaponga. They are now 50-50 sharemilking 220 cows near Otakeho.

Matthew says he had recently read that Fonterra had produced a marketing document to prospective purchasers.

"It outlines all the things which farmers would like to



Matthew Herbert

see Fonterra doing already with Tip Top," he says.

So far the petition has garnered 5-6000 signatures

from around the country.

"I think Fonterra are going to do what they want to do anyway," he says.

## NZ FARMERS LIVESTOCK

**Bulls, Boners and Store Cattle making top money**

Contact

**Tim Hurley - 027 445 1167  
Bryan Goodin - 027 531 8511**

## NZ FARMERS LIVESTOCK

**For all your Livestock requirements Servicing the Coast**

Contact

**Tim Hurley - 027 445 1167  
Bryan Goodin - 027 531 8511**

## Fun and Family mark fifth birthday

Continued from page 16.

works on a 70 acre beef farm. Although a small farm by New Zealand standards, it is still considered an average-sized one in Ireland. Back home Irish farmers

are worried about Brexit.

"At the moment the price of stock is very low," he says. "I was talking to my father and he said the average beef at the factory is going for below three euros a kilo."

Also from Galway is John

Donohue who grew up with Paddy and was persuaded to come over and see New Zealand for himself.

Eamonn Troy from Tipperary comes from a 200 acre beef and dairy farm where they milk 160 cows, a big farm by Irish standards. He is here until the maize season is done, then it is back to Ireland in time for their silage season which is more compressed than its Antipodean equivalent.

Gerard Gallagher from Armagh says he is enjoying his time here.

"I wanted a change, something different," he says. "It's a lovely country, plus it's summer time."



A day of good family fun courtesy of the Goodins.

## QUALITY AGRICULTURE ON TIME

Maize and Grass Silage | Hay and Haylage  
Groundwork and Cropping | On Farm Jobs  
Bulk Cartage and Quarry Metal  
3 ton and 16 ton Diggers

phone: 06 76 38765  
www.goodinag.co.nz

## FLEXI TANKS NZ

EFFLUENT & WATER

021 289 5999 ANTON

www.flexitanksnz.com

Do you comply with new cooling regulations?  
You CAN!!  
with

# THE ICE TANK

- All your pre-cooling issues solved with one solution
- Pre-cooling made simple
- Fits your existing chiller unit (no extra load on your power supply)
- Maintenance Free
- One size fits all
- Utilises cheap night rate electricity
- Extremely cost effective
- Guaranteed to comply
- So simple but it works
- Locally made in Taranaki
- Installed and serviced by the manufacturer.

Call today for an obligation free quote

## Sinclair

Electrical & Refrigeration Ltd

Ph 761 8084  
**OPUNAKE**

sinclairelect@xtra.co.nz  
Okato 752 4084  
Stratford 06 765 4499  
Hawera 274 8084

MASTER ELECTRICIANS  
Electrical Contractors Association of NZ

# Prevent facial eczema at the source

Sporeguard® and Sporewet®

- Keep spore counts below dangerous levels on pasture
- Prevent spore production for up to 40 days
- Minimise production losses and liver damage in stock

**\$39**/ha + GST for product and spray application

Call Marc Gopperth at Gopperth Contracting on 027 247 6021



0800 100 123 [ravensdown.co.nz](http://ravensdown.co.nz)

**Smarter farming for a better New Zealand®**

**ravensdown** 

# G&H Training Bulls Academy 2019 intake named

New Zealand Secondary School representatives Josh Lord and Lukas Halls are two notable players who have been named in the G&H Training Bulls Academy for 2019.

Lord, who is two metres plus, attended Hamilton Boys High School this year and played a key role in their 1st XV as well as pulling on the silver fern for the New Zealand Secondary Schools team in 2018. Halls, originally born in Taranaki, will come home after playing in the midfield for Kings College in Auckland's 1A schools competition and represented the New Zealand Secondary

School Barbarians.

Other key recruits include Blues U18 representatives Crusader Faletagoai (tight head prop) and Josh Jacomb (first five-eighth) from Sacred Heart along with Millennium Sanerivi (hooker) from Kings College.

Locally, New Plymouth Boys High School halfback Kristian Standen and midfielder Daniel Rona, have been selected after standing out for the high school this year. Rona was selected in the CMK Taranaki sevens team and played a key role at the TECT Nationals in December.

G&H Training Bulls Academy Manager David

Ormrod is happy with next year's intake which will benefit to several areas of Taranaki Rugby.

"The Academy's aim is to produce players for the Yarrows Taranaki Bulls, but while in the Academy, the players will take part in CMK club rugby and the Under 19 and AICA Development representative programmes".

Ormrod said during the year, all G&H Training Bulls Academy players will undergo sessions based on the six key pillars of rugby development – technical, tactical, physical, nutrition, psychological and professional development, delivered by Taranaki

Rugby and local resources.

Ormrod said the professional development aspect is an important area for players to ensure they are thinking about life outside and after rugby.

"We have resources to assist players with their off-field lives by holding sessions and workshops on budgeting, career paths, public speaking, just to name a few. It's crucial to have a balance in life", he said.

The year two players include CMK Under 19 Player of the Year Tevita Fa'ukafa and New Zealand U20 wider squad members Michael Loft, Kaylum Boshier and Tupou Vaa'i.

67% of the 2018 Yarrows

Taranaki Bulls were Academy graduates.

**2019 G&H Training Bulls Academy:** Josh Lord, Hamilton BHS (lock), Daniel Rona, New Plymouth BHS (midfield), Kristian Gent-Standen, New Plymouth BHS (halfback), Lukas Halls, King Colle (midfield), Crusader Faletagoai, Sacred Heart (THP), Millennium Sanerivi, Kings College (hooker), Jahmarl Hapi, New Plymouth BHS (wing), Nathaniel Peters, FDMC (flanker).

Jordan Roylance, FDMC (flanker), Adam Smith, New Plymouth BHS (first five), Josh Jacomb, Sacred Heart College (first five), Christian Fa'avae, Sacred Heart

College (flanker), Reece Gray, New Plymouth BHS, (flanker), Moses Christie, Gisborne BHS, (flanker).

**2019 Year 2 Players:** Tevita Fa'ukafa, Coastal (No 8), Tupou Vaa'i, New Plymouth OB (lock), Kaylum Boshier, New Plymouth OB (lock), Kiri Naholo, Clifton (wing), Isaac Kneepkens, Tukapa (wing), Josh Thompson, Coastal (midfield), Toby Burkett, New Plymouth OB (THP), Brent Tucker New Plymouth OB (lock).

Notable Academy graduates have included Te Toiroa Tahuriorangi (Chiefs and All Blacks) and Sean Wainui (Chiefs).



This keen dad was busy keeping these kids busy at the Opunake Surfcasting and Angling Take a Kid Fishing day held on January 3rd, sponsored by Collins Sports Centre.

## Manaia Golf results

Boxing Day. Men. Craig Jones 45. Rod Le Fleming 41. Jamie Johnston 40. Phil Elliott 39. Sam Jones 39. Ladies. Jackie Higgins 40. Dinny Gibbs 38. Chris May 31. Saturday January 5. Men. Paul Hunn +11. Caleb Symes +7. Grant Hastie

+6. Lenny Symes +5. Juniors. Putting. 1. Ashton Pease. 2. Laila Pease. Nett. 1. Ashton Sharp. 2. Lucas Symes. Ambrose. January 7. 1. Tui & Red. 2. Salt & Pepper. 3. YTB. 4. The Lions. Saturday January 12. Men's Stableford. Caleb Symes 44.

Paul Hunn 44. Grant Gibbs 39. Noddy Symes 38. Stu Symes 38. Trevor Larsen 38. Jim Ngere 38. Twos. Caleb Symes. Paul Hunn. Saturday January 19. Men's Stableford. 1. Paul Hunn 41. 2. Grant Hastie 40. 3. Greg Elliott 39. Nett Eagles. Grant

Hastie 3<sup>rd</sup> and 6<sup>th</sup>. Twos. Paul Hastie 13<sup>th</sup>. Juniors. Girls. 1. Hannah Symes and Chantelle Wong. Boys. 1. Olive Symes. 2. Carter Symes. Boys. 1. Ashton Sharp. 2. Lucas Symes. Ambrose. 1. Doogle's Teams. 2. Mix & Match. 3. YTP.

**Newton Gorge JOINERY 2016 LTD**  
**ALL DOMESTIC & COMMERCIAL JOINERY**

• Kitchens • Stairways • Vanities • Lounge Units • Bench Tops • And More

67 Breakwater Rd (up Norma's Way) • NEW PLYMOUTH • PHONE (06) 751 5065 • FAX (06) 751 5085 • WWW.NEWTONGORGE.CO.NZ

**Great Summer Deals with Collins Sports and STIHL**

<p><b>STIHL CHAINSAW</b> MS 170 NOW <b>\$295</b></p> 	<p><b>STIHL LINETRIMMER</b> FS 38 NOW <b>\$195</b></p> 
<p><b>STIHL HEDGETRIMMER</b> HS 45 450mm <b>\$495</b></p> 	

Check out the STIHL Cordless range

**MONEY OR THE BAG!**  
**Get \$50 cash back or \$100 in accessories**

**COLLINS SPORTS CENTRE**  
 Tasman Street, Opunake | 06 761 8778

# Take a kid Fishing



These boys caught a great haul of herrings.



Romy Sayer with her fish.

The annual Opunake Take a kid Fishing competition was held on Thursday January 3 with a record number of 113 entries for the event sponsored by Collins Sports Centre

and run by the Opunake Surfcasting and Angling Club.

Winners. Most herrings.. Olly Perrett (19). Largest Snapper Charlotte Bunning (2.16kg). Kahawai Lucas

Hitch (2.66kg). Eels Alex Moss (3.46kg). Stingrays Lydia Harman (18.34 kg).

Congratulations to all entrants.

## Opunake Bowling Club

On December 6, the Julian pairs were held for women who have played in the western Division. They were played in unsettled weather with cold showers. First were Joy Collins and Nell L'Ami..

The Christmas Triples were held on December 9. First were C. Commane, E. Rothwell and Christine Reader. Runners up were Bev Robinson, Levi Davis and Sandy Olliver. The Christmas Cake raffle was won by Harry Davey.

On December 24-5 the mixed pairs were held in South Taranaki with eight Opunake teams entering. Bad weather cut down the number of games needed to qualify. Paddy Deegan and Chris Commane qualified. The overall winners were Kristin Stampa and Grant Hassall.

The Championship Triples held on January 13 were played in sunny, windy weather. There were some very good games with three of them decided on the last end.

The Men's Championship Triples were won by Paddy Deegan, Harry Davey and Brian Brophy. Runners up were Kevin Ratahi, Darryl McKenzie and Eddie Eves.

The Women's Championship Triples were won by Pauline Davey, Eileen Rothwell and Val Langton. Tit was 16-16 going into the last end. Pauline decided the outcome with her last bowl when she hit a wide bowl in for shot. Runners up were Joy Collins, Nell L'Ami and Kay Fleming.

### SANDFORDS RURAL CARRIERS



For competitive pricing on all your rural cartage requirements - Give us a call today!

Taranaki wide

Phone 0800 707 404

## Value Farm Sheds

Value Building Supplies farm buildings are constructed from quality materials that last, at prices you can afford.



**VALUE**  
Building Supplies

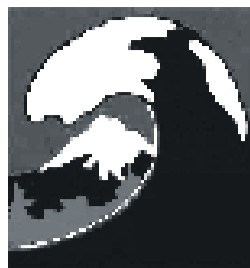
Visit our website for full specs:  
[www.valuebuilding.co.nz](http://www.valuebuilding.co.nz)

BuildLink  
Buy Better Build Better

TROWEL  
TRADES  
SUPA-CENTRE

Decorator  
Centre

1 KATERE RD, NEW PLYMOUTH PHONE: 06 759 7435  
JAMES ST, INGLEWOOD PHONE: 0800 245 535



# OPUNAKE & COASTAL NEWS

## Publication Dates for 2019

JANUARY							FEBRUARY							MARCH							APRIL							
S	M	T	W	T	F	S	S	M	T	W	T	F	S	S	M	T	W	T	F	S	S	M	T	W	T	F	S	
		1	2	3	4	5						1	2						1	2			1	2	3	4	5	6
6	7	8	9	10	11	12	3	4	5	6	7	8	9	3	4	5	6	7	8	9	7	8	9	10	11	12	13	
13	14	15	16	17	18	19	10	11	12	13	14	15	16	10	11	12	13	14	15	16	14	15	16	17	18	19	20	
20	21	22	23	24	25	26	17	18	19	20	21	22	23	17	18	19	20	21	22	23	21	22	23	24	25	26	27	
27	28	29	30	31			24	25	26	27	28			24	25	26	27	28	29	30	28	29	30					
														31														
MAY							JUNE							JULY							AUGUST							
S	M	T	W	T	F	S	S	M	T	W	T	F	S	S	M	T	W	T	F	S	S	M	T	W	T	F	S	
			1	2	3	4						1		1	2	3	4	5	6					1	2	3		
5	6	7	8	9	10	11	2	3	4	5	6	7	8	7	8	9	10	11	12	13	4	5	6	7	8	9	10	
12	13	14	15	16	17	18	9	10	11	12	13	14	15	14	15	16	17	18	19	20	11	12	13	14	15	16	17	
19	20	21	22	23	24	25	16	17	18	19	20	21	22	21	22	23	24	25	26	27	18	19	20	21	22	23	24	
26	27	28	29	30	31		23	24	25	26	27	28	29	28	29	30	31				25	26	27	28	29	30	31	
							30																					
SEPTEMBER							OCTOBER							NOVEMBER							DECEMBER							
S	M	T	W	T	F	S	S	M	T	W	T	F	S	S	M	T	W	T	F	S	S	M	T	W	T	F	S	
1	2	3	4	5	6	7			1	2	3	4	5						1	2	1	2	3	4	5	6	7	
8	9	10	11	12	13	14	6	7	8	9	10	11	12	3	4	5	6	7	8	9	8	9	10	11	12	13	14	
15	16	17	18	19	20	21	13	14	15	16	17	18	19	10	11	12	13	14	15	16	15	16	17	18	19	20	21	
22	23	24	25	26	27	28	20	21	22	23	24	25	26	17	18	19	20	21	22	23	22	23	24	25	26	27	28	
29	30						27	28	29	30	31			24	25	26	27	28	29	30	29	30	31					

### DEADLINES:

**EDITORIAL** - 5pm Thursday prior to publication.

**DISPLAY ADVERTS** - 5pm Friday prior to publication.

**CLASSIFIEDS** - 3pm Monday prior to publication.

Adverts and readers' contributions may be phoned, emailed, posted or dropped into the Opunake & Coastal News: Phone (06) 761-7016 or a/h (06) 761-8206,

Email: ads@opunakecoastalnews.co.nz; Address: 23 Napier Street, PO Box 74, Opunake.

[www.opunakecoastalnews.co.nz](http://www.opunakecoastalnews.co.nz)

**Phone/Fax (06) 761-7016**

**TRADES & SERVICES**

**HEARTLAND CONSTRUCTION** for building decks. Ph 027 236 7129.

**McNEIL DECORATING** – for all your painting and decorating. Ph: Jason McNeil 027 233 4584

**QUALITY PAINTER AND PAPERHANGER** – Ph: Bryan McNeil 027 465 8631

**RAHOTU PANEL & PAINT** for insurance claims. Ph 027 487 7746.

**COASTAL GIB STOPPERS.** Phone Glenn 027 524 5745

**CARPETS** second hand, large selection After Disaster Ltd 223 Devon St West, NP. Phone (06) 769 9265

**HAY & STRAW.** New season quality. Competitively priced. 027 384 4822.

**KNIFE SHARPENING.** \$5 per knife at Collins Sports Centre. Ph 06 761 8778

**RAHOTU PANEL & PAINT** for rust repairs. Ph 027 487 7746.

**HEARTLAND CONSTRUCTION** for alterations. Ph 027 236 7129.

**WANTED FELLED TREES FOR FIREWOOD**

Ph. 021 059 8403

**P.D. FLEMING LOGGING LTD**

Forestry rigged & certified 33 ton loader, National Certificates in Forest Operations, Health & Safety approved. Free assessment on what your trees are worth \$\$\$

**Ph: Paul**

**027 630 9922 or email: paulflems@gmail.com**

**WANTED TO BUY**

**WANTED TO LEASE**

**SCRAP METAL** - for all scrap metal Taranaki wide, give us a call. Molten Metals (06) 751 5367.

**HAYBARN / SHED** required to store firewood. Omata, Oakura area. Ph. Bryan 021 059 8403.

**CHURCH NOTICES**

**Opunake & Okato Co-operating Parish CHURCH SERVICES**

St Paul's Opunake Co-op & Rahotu Opunake Cooperating Parish St Pauls, Havelock St 9.30am every Sunday and the Rahotu - Wesley - 11am first Sunday of the month Oakura - St James - 10am, 2nd & 4th Sundays Okato - St Pauls - 10am, 1st & 3rd Sundays

**Opunake Catholic Church**

Sunday 8.30am at Pungarehu (St Martins), 10am at Opunake (Our Lady Star of the Sea) Other areas  
 Manaia - Sacred Heart - 1st, 3rd Sat at 5pm (2nd, 4th & 5th Sat at Hawera's St Josephs)  
 Kaponga - St Patricks, Sunday 8.45am  
 All welcome

**St Patricks Catholic Church, Okato**  
 Saturday Vigil 6.00pm

**The Wave**

Pentecostal Church 64 Domett St, Opunake  
 Sunday Services 10.30am  
 Women's Group 10.30am Tuesday  
 Men's Group 7pm Wednesday  
 Youth Group 7pm Friday  
 Come along or contact Pastor Murray 027 688 7378

**St. Barnabas Anglican Church**

141 Tasman St, Opunake  
 Sunday Services 10am  
 Communion 2nd, 3rd & 4th Sunday  
 Prayer & Praise 1st Sunday  
 Every 5th Sunday all 4 churches gather for a Combined Service

**Okato Community Church**

Meets 6.30pm Sunday at Hempton Hall. Everyone welcome

**WORK WANTED**

**HI, MY NAME IS ETHAN WHITE.** I have just completed Year 11 and achieved NCEA Level 1 at NPBHS. I am currently looking for any full time work in New Plymouth or Inglewood areas. I am available to start work immediately until I go to WITT in February 2019 to further my education. I am honest, hard working, reliable, show initiative and understand the importance of Health & Safety. Please give me a call on 027 511 4289 or email me at ethanwhite1313@gmail.com.

**FOR SALE**

**TROUBLE SLEEPING?**

Have you tried the new Sanderson's high strength REAL SLEEP FX, a comprehensive herbal formula to support healthy sleep. At the Health Shop Centre City, 06 758 7553.

**TRAMPOLINE, FISH TANK,** truck mirrors, Japanese screens, '97 Mitsi RVR, Suzuki Calvacade motorbike and trailer, Daihatsu truck, Chopper Reid books, wrought iron wall unit, drums and cymbals, suit of armour, wine rack and stereo system ex town hall. All fair prices. Ph 06 756 5811.

**KEEP THOSE FLIES** at bay with an aroma diffuser, new stock arrived. Come in and check out the different essential oils available. At the Health Shop in Centre City, 06 758 7553.

**CASSETTE AUDIO TAPES.** A mixture. \$2 each ono. Also cassette holders. Phone 06 761 7016 to view.

**RAFFLE RESULTS**

**VOICE FOR LIFE:**

R. Askew groceries, D. Reynolds groceries, M Brophy Christmas cake, J. Pederson biscuits, J. Julian chocolates.  
 Thank you sincerely for your support of our unborn babies. May the New Year be kind to you all.  
 Your VFL committee.



OPUNAKE & COASTAL NEWS  
 THE NEWSPAPER TARANAKI LIKES BEST



Look for the Newspaper Reading Cow on our newstands

**PUBLIC NOTICES**



The Opunake District Foodbank wishes to thank the community for the many donations of food, money and gifts that were so generously given as part of the Christmas Foodbank drive. There was also a large amount of time and effort from many volunteers from our community, who without the whole drive would not have been possible. A special thanks to Opunake Volunteer Fire Brigade, Opunake St John Volunteers and Opunake Surf Lifesavers volunteers and all those who assisted with their time.

The Christmas drive was very successful, and we were able to deliver lovely food parcels with all the staples and some Christmas goodies to 39 families, this is the most we have ever delivered at Christmas time and all recipients were extremely grateful.

We would also like to take this opportunity to thank the many individuals (most who wish to remain anonymous) and organisations who assisted throughout 2018; Rahotu Store, Opunake 4 Square, Four Square 45, Opunake Village Market, Opunake & Coastal News, Lakeside Lions Opunake, Opunake Lions, Opunake High School, Opunake Primary, St Josephs Opunake, St Pauls Church, The Wave Church, St Barnabas Church and Our Lady Star of the Sea Church. In 2018 we supplied 109 parcels to 166 adults and 142 children. So Thank you Opunake for helping us to help our community.



**SPORT NEW ZEALAND RURAL TRAVEL FUND**

Applications for financial assistance under the Sport NZ Rural Travel Fund are now open.

The fund is open to sports clubs and school teams with young people aged between 5-19 years who require assistance with transport expenses to regular, local sporting competitions.

Application forms are available from all LibraryPlus centres, the Council Contact Centre on Albion Street, Hāwera, or the Council website [www.southtaranaki.com](http://www.southtaranaki.com)

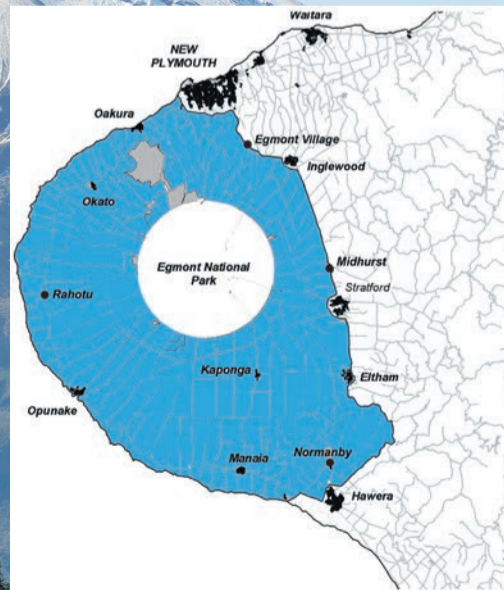
For further information please contact: Executive Assistant Community & Infrastructure Services 0800 111 323, [funding@stdc.govt.nz](mailto:funding@stdc.govt.nz)

Applications close **Thursday 7 March 2019** at 4.30pm.

**Our next issue is due out on February the 14th. Call our friendly Sales Team on 06 761 7016 to discuss your advertising needs.**

**Delivered free around the Mountain every fortnight.**

**Ph: 06 761 7016**



**OPUNAKE & COASTAL NEWS**

**Te Kura Maori o Tamarongo**

169 Tasman St, Opunake

Start of Term:  
 Monday February 4.

For further information  
 Ph Tumuaiki Gabrielle  
 Whitu (027) 761 7430



**OPUNAKE BUSINESS ASSOCIATION**

Meeting 1st Monday of each month  
 at 5.30PM

Hughsons & Associates Boardroom at the Opunake Business Centre, 23 Napier St, Opunake



**LOOKING FOR WORK**

**LOOKING FOR WORK?**

At the suggestion of a regular advertiser, the Opunake & Coastal News is considering starting a Work Wanted column in the classified section of the paper which will be free.

This is partly to fill a gap in the media.

Another newspaper used to run such a column.

Anyone seeking work is invited to submit their details to the paper.

Your skills, experience, availability etc, is a suggestion but this will be up to the person.



SITUATIONS VACANT

# Poultry Farm Workers



- **Training provided**
- **Opportunities for future career growth**
- **Join a company you can be proud to be a part of**

Aviagen is the world's leading supplier of quality broiler breeding stock. Aviagen New Zealand Limited is an important part of this global organisation which has been built on generations of knowledge, expertise and passion. We are proud of our product and the way in which we deliver it. Our business is ever expanding, offering opportunities and supporting you to begin and build a successful career

We are looking for an enthusiastic person, who is physically fit and able to perform manual laboring tasks, with a proven record of being reliable, hardworking and willing to go that extra mile, to join our team within our Poultry Breeder Farms located in Urenui, Motouui and Opunake.

This position will involve working in controlled environment livestock shed to carryout general labouring and livestock handling associated with housing and rearing poultry; with a strict adherence to Animal Welfare, Biosecurity and Health and Safety standards.

**Our ideal candidate must;**

- Be prepared to work on weekends and public holidays when rostered (Overtime rates will apply to all hours worked above 40 hours, plus weekends)
- Be willing to participate in an intensive 6 month training programme, encompassing Ag ITO units and internal training processes
- Display an affinity for quality and pride for a job well done
- Have tolerance to all aspects of the poultry livestock industry
- Have no contact outside work with Birds (of any type), pigs or intensive livestock operations
- Be comfortable to shower on and off site before commencing work
- Be able to supply own transport and licence

Shortlisted applicants will be reference checked and required to successfully pass a pre-employment medical, this will include drug and alcohol testing and require ACC history to be supplied.

If you want to be part of a great team and build a career with a world leader then apply online at [www.recruitaanz.com](http://www.recruitaanz.com)

Applicants for this position should have NZ residency or a valid NZ work visa.

# What's On Listings



**ONGOING**

**The Opunake Music Club** - Come along every fortnight and take part or just watch. Anyone welcome. Next meeting November 27 at Coastal Care, Napier Street 7:30pm.

**Jonathan Young:** Need to chat with your Local MP Jonathan Young? Jonathan will now hold his meetings at Coastal Care. For more information phone: 06 7591363. Or email [newplymouthmp@parliament.govt.nz](mailto:newplymouthmp@parliament.govt.nz)

**Movies at Everybodys Theatre in Opunake:** Playing several days and nights each week. Refer timetable in newspaper.

**Pregnancy Help Taranaki:** Is now in OPUNAKE! Are you pregnant? Do you have a baby or young family? To hear more, like us on facebook [www.facebook.com/preghelptaranaki/](http://www.facebook.com/preghelptaranaki/). Please come and meet us and find out how we may be able to help you.

**SUNDAYS**

**Opunake Country Music Club:** Second Sunday of each month at the Opunake Town Hall, 1-4pm. All welcome

**MONDAYS**

**Tainui Day Centre - St Barnabas Church Hall, 141 Tasman Street Opunake:** Each Monday 10 am - 12:230 pm. Information call Jenny 7618080 or Glenys 6558025

**Opunake Friendship Club:** Meeting last Monday of each month in Opunake Town Hall at 1.30pm. All welcome.

**Opunake Business Association:** Usually meet on the 1st Monday of each month.

**TUESDAYS**

**Club Hotel Pool:** Tuesday Nights. New players welcome.

**WEDNESDAYS**

**Lisa Keen Audiology at Coastal Care, Opunake:** Wednesdays 9am - 5pm, for an appointment call 027 591 4222 - 0800 555 676

**Schnitzel Night:** Every Wednesday at the Stony River Hotel, Okato

**Club Hotel Texas Holdem Poker:** Wednesday and Thursday Nights at the Club Hotel.

**Opunake Embroiders Guild:** Meet 2nd and 4th Wednesdays of the month, 10.30am-3pm at the Opunake Business Centre, Napier St, Opunake. Just come along or phone Sheryl 06 761 8769.

**THURSDAYS**

**Club Hotel Texas Holdem Poker:** Wednesday and Thursday Nights at the Club Hotel.

**Coastal Young Farmers:** Meet 2nd Thursday of every month at 7pm at the Okato Bowling Club.

**Taranaki Country Music Hall of Fame, Manaia:** Running every Thursday night from 7.30pm, 11 Surf Highway, South Road, Manaia.

**Egmont Euchre Club:** Meets every Thursday 1pm at the Opunake Bowling Club

**FRIDAYS**

**Eltham Business Association Friday Markets:** 8am to 1pm, Carpark of Touch Point, High Street, Eltham.

**WEEKENDS**

**The Historic Cape Light & Musuem:** Open 11am – 3pm weekends, Bayly Road, Warea.

**10 NOVEMBER – 5 MARCH 2019**

**Illusion, Nothing is at it Seems Exhibition:** At Puke Ariki in New Plymouth

**DECEMBER 16 – FEBRUARY 3, 2019**

**TSB Festival of Lights:** Pukekura Park, NP from 8.30pm – 11pm.

**JANUARY 26 TO FEBRUARY 9, 2019**

**2019 Opunake Boat & Underwater Club OMV Annual Tournament:** Refer advert and article for details of event **FEBRUARY 2**

**Platinum Homes Taranaki Cup Day:** Come Racing at Pukekura Raceway, NP

**FEBRUARY 6**

**Kaponga Lions Club fun run walk 10 km:** Dawson Falls gates to Victoria Park. Free bus from park leaves 9-30 am. Spot prizes BBQ. Adults \$10 Child \$5 Family \$20. Contact D Smith 06 7646 461.

**FEBRUARY 8**

**Opunake Bowling Club Twilight Bowls:** Starts tonight, Friday February 8 at 6.30pm.

**FEBRUARY 10**

**Summer Movies in the Park:** At Soldiers Sark, Eltham. Starts at 12.30pm

**Open Mic. Gig:** At the Rahotu Tavern & Cafe from 1pm to 5pm. Refer advert for details.

**FEBRUARY 16 AND 17**

**Taranaki Vintage Machinery Club Hay Day:** At 331 Waitara Rd, Brixton. On from 10am to 4pm both days. Refer article and ad for details.

**FEBRUARY 23**

**Americarna hits New Plymouth:** Free bus to Americarnival in New Plymouth, departs Opunake at 8.30am. Stops along the way. Refer ad for times and details.

**MARCH 14 TO MARCH 17**

**Taranaki Masters Games:** Lots of Sports to enter into. Refer article and ad for details.

**OPUNAKE HIGH SCHOOL**  
Te Kura Tuarua o Opunake

**OPUNAKE HIGH SCHOOL TEACHER AIDE**

We require a Teacher Aide to support teaching and learning in the classroom and Student Support Centre. Total hours for this position to negotiated to a maximum of 30 hours per week. Experience working with students with special needs would be an advantage. Written applications should include a brief CV to:

The Principal  
Opunake High School  
P O Box 4  
Opunake  
[admin@opunake-school.nz](mailto:admin@opunake-school.nz)

Applications close  
Thursday 7th February, 2019



## OPUNAKE & COASTAL NEWS

The Opunake & Coastal News is now available in newstands throughout Taranaki at the following locations:

- Challenge Spotswood Petrol Station
- The Health shop, Centre City
- Westside Grille, Tukapa Street, Westown
- Outside First National, Cnr Victoria and High Streets, Hawera

Advertisers who put in public notices and display adverts in the What's On Section for events are welcome to additionally provide extra editorial and photos FREE OF CHARGE, to help promote the event.



# New events at Masters Games



The Cycling will start at Stanley Road School. Participants must be 35 or older.

The TET 2019 Taranaki Masters Games are back from 14-17 March. Entries are now open. There are 21 great sports on offer; so something for everyone from individual events to pairs' events to team events.

Many thanks to the TET for their continued supports which allows the TMG organising committee to keep the registration costs down. New to the 2019 programme are Weight Lifting (Push/Pull Event) and Mountain Biking. Check out our website for all information on [www.tmg.org.nz](http://www.tmg.org.nz) and refer to the timetable for those sports who are hosting outside of the core weekend dates. Brochures available at your local library or I site. Enquiries to the games administrator on 06 765 4484 or [entries@tmg.org.nz](mailto:entries@tmg.org.nz)

Jacqui Wood

TMG programme for the first time.

The Lion's Den Gym and Fitness Centre in Stratford is hosting this event on Thursday 14 March at 9.30am. Here's an opportunity to showcase that as you age, it is entirely possible to remain strong and resilient. Lifts that will be competed in are the Squat, Overhead Press, and Deadlifts for 1RM. Age groups are 40-49, 50-59, and 60+ (Deadlift only) so start your training now! Enquiries to Hayden Mattock on 06 928 4515 or enter on line at [www.tmg.org.nz](http://www.tmg.org.nz)

Hayden Mattock

## 2019 TET Taranaki Masters Games Weight Lifting (Push/Pull)

Weight Lifting (Push/Pull Event) is available in the

## 2019 TET Taranaki Masters Games Mountain Biking (Cross Country)

This event will be hosted on Sunday 17 March with

a race briefing at 10.15am. Age groups are 30-39, 40-49, and 50+. New Plymouth Mountain Bikers provide a network of trails and events that encourage healthy lifestyle and a social and competitive riding environment within the Taranaki Region. For 2019 we have combined our most competitive event, the XC Club Championships, with the Taranaki Masters Games. We look forward to meeting and mixing with you, welcoming you to the fantastic community MTB trail network we have at Lake Mangamahoe, and to engaging in some good racing. Pedal on! Enquiries to Alan Ramage-Brown on 027 550 1127 or enter on line at [www.tmg.org.nz](http://www.tmg.org.nz).

Alan Ramage-Brown



**OPEN 7 DAYS**

9.00am - 5.00pm Monday to Friday,  
9.00am - 4.00pm Saturday and  
10.00am - 3.00pm Sunday



30 Day Money Back Guarantee on all footwear



Locally owned and operated

**87 DEVON ST EAST, NEW PLYMOUTH**  
PH: 06 758 5146  
[WWW.SHOECLINIC.CO.NZ](http://WWW.SHOECLINIC.CO.NZ)

**SEND US YOUR SPORTS STORIES AND PHOTOS!**



**OPUNAKE & COASTAL NEWS**

**NEWS**

Promote your business or event in our area, call us on:

Ph/Fax: 06 761 7016 - 23 Napier Street, Opunake  
or e-mail us: [ads@opunakecoastalnews.co.nz](mailto:ads@opunakecoastalnews.co.nz)



Taranaki

# Masters

Games



**2019 Sports:**

- Athletics
- Croquet (Golf)
- Cycling
- Darts
- Dog Agility
- Equestrian
- Football
- Golf
- Indoor Bowls
- Lawn Bowls
- Mountain Biking
- Netball
- Pistol Shooting
- Pool
- Running & Walking
- Swimming
- Table Tennis
- Tennis
- Volleyball
- Wine Appreciation
- Weight Lifting (Push/Pull)



2019

14th - 17th March



[@ entries@tmg.org.nz](mailto:entries@tmg.org.nz)

[06 765 4484](tel:067654484)

[www.tmg.org.nz](http://www.tmg.org.nz)

[f /taranakimastersgames](https://www.facebook.com/taranakimastersgames)

## Timetable

Sport	Venue	Min. Age	Thur 14	Fri 15	Sat 16	Sun 17
Athletics	Inglewood	30				
Croquet (Golf)*	Inglewood	50				
Cycling	Stanley Rd School	35				
Darts	New Plymouth	30				
Dog Agility	Normanby	35				
Equestrian*	Waitara	35				
Football*	New Plymouth	35				
Golf	Stratford	30				
Indoor Bowls	Stratford	30				
Lawn Bowls	Stratford	35				
Mountain Biking	Egmont Village	30				
Netball	Stratford	25				
Pistol Shooting	Douglas	25				
Pool*	Stratford	35				
Running & Walking	Stratford	30				
Swimming	Stratford	20				
Table Tennis*	Stratford	35				
Tennis*	New Plymouth	40				
Volleyball	Stratford	25				
Weight Lifting (Push/Pull)	Stratford	40				
Wine Appreciation	Stratford	30				

**Ways to Enter**

Enter online: [www.tmg.org.nz](http://www.tmg.org.nz)

Email to request an entry form: [entries@tmg.org.nz](mailto:entries@tmg.org.nz)

Phone the games administrator, Donna (06) 765 4484 to request an entry form

**Registration Fee**

The sport fee stated is in addition to the registration fee of \$15.

Late entry fee of \$25 will apply after 7 March.

The registration fee is payable once, irrespective of the number of sports/events entered.

Full event details, including competition rules, are available on our website [www.tmg.org.nz](http://www.tmg.org.nz)

\*variable dates: Equestrian, Football, Pool & Table Tennis Sat 9 March. Tennis Sat/Sun 9 & 10 March. Croquet Sat/Sun 23 & 24 March



# A weekend of vintage farming awaits at Waitara

The Taranaki Vintage Machinery Club is holding their Biennial Vintage HayDay on Saturday February 16 and Sunday February 17 at 331 Waitara Road, Brixton, Waitara from 10am-4pm both days.

The weekend is about celebrating and showcasing vintage farming, hay making, pioneer living and children's activities. The event is about families young and old enjoying themselves and having fun, but its also about sharing the knowledge of what life was like in the 1930s and 50s, bringing back memories of the older generation and

providing a learning curve for the young.

Club members shared a passion for rebuilding, restoring, salvaging and collecting vintage machinery and this event lets them really show it off. Some exhibits will be display only, but others will be hard at work, ploughing the fields, mowing the hay, and building a real hay stack. Come and see the big Steam Traction Engines.

There will be demonstrations throughout the day as well as many static displays. Tractors, farm machinery, steam traction engines, vintage cars, trucks, military vehicles, stationary engines, and magnificent Clydesdale

Horses will be on display

There will be a whole corner of the paddock for the kids, including a petting zoo with many animals (baby chickens, ducklings, if they are born in time, calves, lambs, Baby the cow, Pip the goat, rats, guinea pigs, rabbits and alpacas). There will be unicycle bikes, strong man, needle in the haystack, and pony rides – you can even ride a Clydesdale, as well as drum rides, tractor/trailer rides and traction engine rides. There will be heaps to do. If you come at lunchtime there will even be old fashioned sack races, egg and spoon and tug of war, Huirangi Primary school

is providing the Maypole dancers. There will be lots of fun and all the activities are free.

Come and visit the Shacks to see Pioneer living, have a scone from the coal range and do some washing in the laundry. Churn the butter, and ground the corn to make flour in the "I Can Do it" Shack. There will be food tents and craft stalls available as well.

Funds raised from the event enables us to donate to several charities around Taranaki. Entry is \$10 per adult – children under 14 are free, Eft-pos is available at the gate.



An old Massey Ferguson tractor operating an old square baler.

# Annual fishing tournament underway

Get your rods, boats and fishing tackle ready as the Opunake Boat and Underwater Club will be hosting the OMV Snapper Fishing Competition from January 26-February 9. Early Bird Entry is \$50 for members and non members \$60 while anglers and \$20 for divers if paid before the competition starts on January 26. Tickets are available from Collins Sports Centre in Opunake or you can pay directly online 15-3952-0375532-00 – remember to put your name as the details. Late entries can be purchased from the Weigh In Master during the tournament or Collins Sports Centre– remember these late entries incur a \$10 penalty – so make sure you are in early. The competition will be run along similar lines as in

previous years. Competitions begin with Registration Night, including a BBQ on Friday January 25 from 5pm to 8pm at the Club Rooms. We will also run some BBQs during the competition.

We have had a terrific response from our sponsors and this year have extended the number of prizes in both the Blue Cod and Kahawai sections as these are fish that can be easily caught by all entrants in all types and sizes of boats. Our sponsors include OMV, Corkill Systems, ASB, Ballance Agri Nutrients, Sandfords, McDonalds Real Estate, Malcolm Campbell Livestock, J Swap, Campbell Contracting, Tasman Marine, West Coast Marine, Collins Sports Centre, Farm Source, Silver Fern Farms

Remember, all boats

can only be launched and retrieved from Middleton Bay.

There is only the one weigh in station which is in the club rooms, which will be open 6pm to 8.45pm each day or otherwise if a committee member is available outside of these times.

Prize Giving will be at the Club Rooms on Saturday February 9 with a complimentary roast dinner.

This year our proceeds will be going towards getting our new John Deere tractor ready to operate in the local conditions.

The tournament organiser is club commodore, Nigel Corbett and supported by Steve Corkill, Dave Cathie, Mick Severn, Sean Luttrell, Graham Payne and Lynda Corkill.

**Rahotu Tavern & Cafe**  
**OPENS**  
Saturday Feb 2nd  
9am to 4pm

**Hours:**  
Thurs, Sat, Sun: 7am-4pm  
Fri: 7am-8pm  
Evening Meals

Every purchase puts you in a monthly draw for a great prize. This month you could win a 40" Veon TV (Drawn March 2)

**Rahotu Tavern & Cafe**  
**MAIN SOUTH ROAD, RAHOTU**  
**PH: 06 763 8787**

**Taranaki Vintage Machinery Club**

**HAY DAY**

A celebration and showcase of Vintage Farming, Hay Making, Pioneer Living & free children's activities

**331 Waitara Rd, Brixton, Waitara**  
**Sat 16th & Sun 17th Feb 2019**  
**10am - 4pm Daily**

Adults \$10 - Children under 14 free  
EFTPOS at gate

Follow us on Facebook - Vintage HayDay 2019

Saturday Feb 10th  
1pm to 5pm  
Backline provided

**OPEN MIC GIG**

**Rahotu Tavern & Cafe**  
**MAIN SOUTH ROAD, RAHOTU**  
**PH: 06 763 8787**

**OPUNAKE BOAT & UNDERWATER CLUB**

**2019 OMV Annual Tournament**

**\$1000 Snapper Fishing Competition**

**DATE:** 26<sup>th</sup> January to 9<sup>th</sup> February 2019 Inclusive

**Prize Giving:** Saturday 9<sup>th</sup> February with Meal at 6pm and Prize Giving 7pm

**\$1000 cash for largest snapper plus prizes for next nine places**

Also up to 5 prizes for heaviest for selected species including – Kahawai, Blue Cod, Gurnard, Trevally, King Fish and John Dory and a Dive Section. Plus, random spot prizes for those who have not weighed in prize winning catches.

**Late Entry Fee: \$50 Member, \$50 Non Member and Diver \$20 paid by 25<sup>th</sup> January. Late entries will incur \$10 penalty**

Tickets can be purchased from Collins Sports Centre during tournament and Weigh-Masters throughout the competition. Or you can pay the Club on line at any time with the TSB in Opunake, 15-3952-0375532-00 (remember include angler's name as reference) – the bank account will be checked regularly.

**Complimentary Roast Meal on Final Night for all ticket holders**

**A huge thank you to our Sponsors:**

OMV, Collins Sports Centre, Campbell Contracting, Corkill Systems, J Swap, Silver Fern Farms, ASB, Sandfords, Ballance Agri Nutrients, Tasman Marine, Malcolm Campbell Livestock, West Coast Marine, FarmSource, McDonalds Real Estate

See article for further details

# What's on at Govett/Brewster/Len Lye Cinema

**Films**

**Kids' flicks:** These school holidays the Len Lye Centre Cinema screens free films especially for children until Sunday 3 Feb. The films screen weekdays at 10.30am and 1.30pm and on weekends at 10.30am

**Peter Peryer:** Documentary portrait of acclaimed New Zealand artist photographer. Peter Peryer: Portrait of a Photographer screens at the Len Lye Centre Cinema on Saturday February 2 and 9 at 2pm. Free entry.

**Quiet Earth:** On Saturday February 2 at 4pm, the Len Lye Centre Cinema screens New Zealand film The Quiet Earth as a tribute to director Geoff Murphy. After a top-secret experiment misfires, a scientist named Zac Hobson awakens to find himself alone in the world. In a desperate attempt to search for others, he finds only two, who have their own agenda. Entry is \$12 or \$10 concession. Book online or instore.

**Utu Redux:** Geoff

Murphy's original 1983 classic, digitally re-mastered and remixed in 5.1 stereo, screens at the Len Lye Centre Cinema on Sunday February 3 at 4pm. In 1870's New Zealand, Te Wheke, a scout for the colonial troops, finds his tribe massacred by the army he is working for. Anguished and betrayed, he vows to exact retribution – utu – on the Pakeha. Free entry.

**Pink Floyd:** Live in Pompeii screens at the Len Lye Centre Cinema Thursday February 7 at 7pm. This 1972 concert documentary film features the English rock group Pink Floyd performing at the ancient Roman amphitheatre in Pompeii. Entry is \$15 or \$12 concession. Book online or instore.

**Spirited Away:** The Japanese animated film by noted director Hayao Miyazaki follows a 10-year-old girl into a world ruled by gods, witches and spirits and where humans are changed into beasts.



**Poppy making Wobbly Blobs at the Govett Brewster/Len Lye Centre.**

Screens at the Len Lye Centre Cinema on Saturday February 9 at 4pm. Entry is \$12 or \$10 concession.

**Eternity's Gate:** A dramatic look at the life of famed but tormented painter Vincent van Gogh during his final years when he lived in Arles, France. The film, directed by acclaimed artist Julian Schnabel, screens at the Len Lye Centre Cinema on Thursday February 14 at 7pm. Entry is \$12 or \$10 concession. Book online or instore.

**Art Young Visionaries:** The Term 1 after school art classes for kids at the Govett-Brewster Art Gallery are

now taking bookings for 6-8 year olds (Wednesdays) and 9-12 year olds (Thursdays). Classes are at 3.45 – 5.15pm and cost \$60 per term per child. Book online at [www.govettbrewster.com](http://www.govettbrewster.com)



**Family Art at The Govett Brewster/Len Lye Centre.**

[govettbrewster.com](http://govettbrewster.com). This term's guest tutor Diana Wynyard helps students create crazy families of art. Tamariki sculpt fantastical monsters with personalities and a wild look in their eye(s), invent and photograph shadowy worlds of light and dark for them to inhabit, and mould magnified views of their texture and feel.

**Pre-school art:** Experience, inspire, and create with your little ones aged three years and up. Have fun with our Govett-Brewster Art Gallery educators seeing and making art, with tips for caregivers engaging preschoolers in art. He hōtaka reo Māori hoki. Play groups, early childhood centres and kōpae are welcome, bookings required for groups. Entry is by donation. Friday February 1, 10.30am – 11.30am.

**Light drawings:** Join exhibiting New Plymouth artist Jacqueline Elley in a workshop based on her current Govett-Brewster Art Gallery exhibition Luxoplasts. Inspired by microscopic marine life, Elley's biomorphic light drawings emanate from a dark and unseen world that reflects both the natural and man-made detritus polluting the environment. Elley and Marine Biologist Dr Emily Roberts will lead you in an exploration of the merging

of science and art through the microscopic world of our local waterways as you make a work of art that makes the unseen visible. Sunday February 3, 10am - 1pm. Free entry, donations appreciated. Book online. Participants 15 max., suitable for ages 12+.

**Family art:** Call in to the Govett-Brewster Art Gallery/Len Lye Centre on Sunday afternoon for hands on, art making sessions for the whole family. From 1pm to 3pm, stay as little or as long as the kids are keen. Entry is by donation.

**Waitangi weaving:** This Waitangi Day, Wednesday February 6, join the Govett-Brewster Art Gallery team from 11am – 2pm at Puke Ariki Landing for a drop-in session of family-friendly, hands-on, weaving lessons. Learn how to create a fish or bookmark from harakeke (flax). Free, all welcome.

**Public art:** The golden glitter tree from New Plymouth artist Reuben Paterson has taken root at the Taranaki Regional Council gardens Pukeiti. The hand-made, life-size sculpture, titled The Golden Bearing, is part of the Govett-Brewster Art Gallery Collection. You will find it at The Founders Lawn until Sunday March 3.

**Arty seniors:** Govett-Brewster Seniors take a look at the art and have a good talk about it on Friday February 8, from 10am, after meeting next door for a coffee at 9.30am. Entry is free, no knowledge of art is needed.

**Moving sculpture:** Learn about and experience the Len Lye kinetic sculptures Watusi, Rotating Harmonic and Zebra on a tour of the Len Lye exhibition Group Therapy. Join curator Paul Brobbel from 11am – 12pm on Sunday February 10 at the Govett-Brewster Art Gallery/Len Lye Centre.

**CREATIVE CLEARANCE**

**Art Sale**

Art at bargain prices  
Large selection of Prints  
Art & Craft Books  
Frames & Art Materials

THE VILLAGE GALLERY | 166 HIGH STREET, ELTHAM  
OPEN MONDAY - SATURDAY 10AM - 3PM

**TE KIRI SPORTS AND REC. SOCIETY**

Applications open for 2019

Scholarship awards

Sports, cultural, academics, trades

Close Feb 20th 2019

For forms and information

Mike Starsmore Phone 06 7617228



Reuben Paterson *The Golden Bearing* 2014. Govett-Brewster Collection.

**Reuben Paterson: The Golden Bearing**

Pukeiti Sat 2 Feb – Sun 3 Mar 2019

WOMAD Fri 15 – Sun 17 Mar 2019

Taranaki's darling sculpture is back this summer! New Plymouth-based artist Reuben Paterson's life-size, gold-glittered, rustling tree takes root at Pukeiti and WOMAD.

The hand-sculpted, gold glittered tree invites reflection on people's magical relationships with nature in the seemingly natural, yet man-made, park landscapes. It questions what is artificial, real, or imagined.

Artist Reuben Paterson (b.1973, Auckland; Ngāti Rangitihī, Ngāi Tūhoe, Scottish) found inspiration for this work in Taranaki's gardens of national significance as Artist in Residence in 2015. Now part of the Govett-Brewster Collection, *The Golden Bearing* combines this local inspiration with the mythology of trees and his Māori heritage as a reference point to navigate toward and from during summer visits.

#glittertree

govettbrewster.com



Govett-Brewster Art Gallery

Len Lye Centre





**YES**

**CHADDY'S CHARTERS ISLAND TOURS**

Mountain Bike, Kayak and Paddle Board Hire

*Fun to share with friends and family*  
8.30am to 4pm

**Open Daily**  
Ph: 06 758 9133

# Magic of Festival of Lights inspires artists

Arielle Walker and Jasmine Grace have vivid memories of visiting NPDC's TSB Festival of Lights as kids and being captivated by the magic of the lights.

Now they say they have come 'full circle' with a return to the Pukekura Park event as the artists and designers of two light installations at this season's festival.

Arielle, co-designer and co-creator of *Nebula Now*, grew up in Auckland but would take a trip to the "magical" festival each year while visiting her dad's hometown and staying with her grandparents for the summer.

"The glow stones specifically stuck as an image in my head," Arielle says. "I remember taking them home and couldn't understand why they wouldn't work anymore. It made the park seem like such a magical place and it was very cool as a kid to have that experience."

Arielle created *Nebula Now* with partner Liam Mullins and it features above the glow stones which are back at the Festival this season.

"When we created *Nebula Now* all I could think of was this magical experience as a kid and wanting to recreate that feeling in an installation," Arielle says.

The installation is a



Seed and Nebula Now are new to this year's TSB Festival of Lights.

chandelier created from repurposed, recycled Perspex materials and keychains and is illuminated by a UV black light which gives it a surreal, glowing appearance.

"I remember saying to Liam if I could have this showing at Taranaki it would be the most

incredible feeling. When I saw the open call go out I was so excited, because the Festival was exactly what the work was made for in my head. It felt like the perfect full circle," she says.

Jasmine, co-designer and co-creator of light installation

*Seed*, grew up in New Plymouth in a family of artists. Her recollections of the Festival are associated with a family ritual of visiting the homes strung with Christmas lights, before going to the Festival "as a finale."

*Seed* was designed and created by Jasmine, Rachel Naser and Molly Brankin during their studies at Massey University, and the concept of the piece is inspired by nature's stages of bloom and decay. The artwork is made up of a fine chicken

wire that becomes invisible in darkness. It is then lit by a projection of digitally-edited video footage of flowers blooming.

It was Jasmine's tutor Antony Nevin who encouraged the artists to submit their artwork to the Festival. Jasmine travelled back to New Plymouth from Wellington to help with the installation of *Seed* last month.

"I'm really glad I got to go along and install it. It felt like so much more of a success, and standing there thinking 'I remember this place as a little girl' was a cool feeling," says Jasmine.

NPDC Recreation and Culture manager Teresa Turner said it was fantastic that the TSB Festival of Lights was now inspiring a new generation of artists and designers.

"We've had 10 new installations this season including these great designs by Arielle and Jasmine," she says. "We're delighted to see home-grown talent coming through with original ideas that keep the Festival fresh for the 125,000 who visit Pukekura Park each season."

*Seed* and *Nebula Now* are on display in Pukekura Park until Sunday February 3.

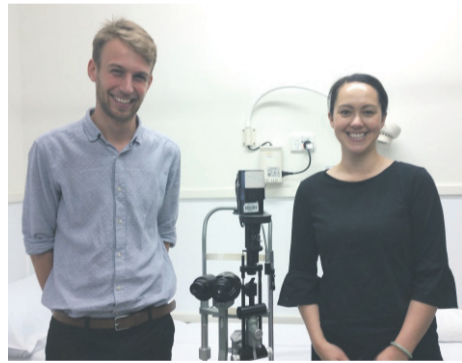
## Introducing another great service....



CoastalCare would like to welcome

### Browning & Matthews Optometrists

Clinic available every 2nd Thursday. Call 06 759 4126 to book an appointment



Visit us at Browning & Matthews Optometrists and experience our dedicated, unrivalled expertise and service.

Enjoy standards of professional personal eyecare that will ensure your vision functions effortlessly at its very best.



See better  
Look better  
Feel better

New Eye clinic available at Coastal Care Health & Community Centre



**Opunake - MOVIES - BOUTIQUE THEATRE - HIRE**  
 For information email: [everybodystheatre@gmail.com](mailto:everybodystheatre@gmail.com) or check facebook- Everybody's Theatre  
 Check out our website at [www.everybodystheatre.co.nz](http://www.everybodystheatre.co.nz) - Phone 027 3837926

FEBRUARY			
Lollies, Popcorn, Ice-creams, Chocolate bars, Coffee & Tea For Sale		No Eft-Pos	Adults \$10, Students 4-16yrs \$8, Under 4 free Senior Citizens \$8. ID required for all R movies
	<b>HOW TO TRAIN YOUR DRAGON</b> Animated, Fantasy   1hr 44mins   PG Hiccup and Toothless will finally discover their true destinies: the village chief as ruler of Berk alongside Astrid, and the dragon as leader of his own kind. As both ascend, the darkest threat they've yet faced will test the bonds of their relationship like never before. Fri 1 <sup>st</sup> Feb 1pm   Sat 9 <sup>th</sup> Feb 1pm		<b>SPIDERMAN</b> Animated, Action   1hr 57mins   PG Miles Morales is juggling life between being a high school student and being Spider-Man. When Wilson "Kingpin" Fisk uses a super collider, another Spider-Man from another dimension, Peter Parker, accidentally winds up in Miles' dimension. Fri 1 <sup>st</sup> Feb 7pm   Wed 6 <sup>th</sup> Feb 7pm
	<b>MCQUEEN</b> Documentary   1hr 51mins   M; Language, Nudity, Rape & Suicide London Eastender Lee Alexander McQueen started his career as an apprentice at Saville Row. By 27, McQueen was head designer at Givenchy. He went on to win British Designer of the Year four times. His controversial shows made headline after headline. Sat 2 <sup>nd</sup> Feb 7pm   Wed 6 <sup>th</sup> Feb 1pm		<b>THE FAVOURITE</b> Drama, True Story   2hr 1min   R13: Sexual Material & Offensive Language In the early 18th century, England is at war with the French. A frail Queen Anne occupies the throne, Lady Sarah governs the country in her stead while tending to Anne's ill health and mercurial temper. Sun 3 <sup>rd</sup> Feb 7pm   Sat 9 <sup>th</sup> Feb 7pm   Wed 13 <sup>th</sup> Feb 1pm
	<b>DRAGONBALL SUPER : BROLY</b> Animated, Fantasy   1hr 41mins   PG A planet destroyed, a powerful race reduced to nothing. After the devastation of Planet Vegeta, three Saiyans were scattered among the stars, destined for different fates. While two found a home on Earth, the third was raised with a burning desire for vengeance. Sat 2 <sup>nd</sup> 1pm   Fri 8 <sup>th</sup> Feb 7pm		<b>STORM BOY</b> Adventure, Family   1hr 39mins   PG Mike Kingsley, a sheltered young boy, lives in a remote coastal region of Australia with his reclusive fisherman father, Tom. When a group of hunters kills a majestic pelican and orphans its young on the beach, Mike convinces his father to let him raise the chicks to adulthood Sun 10 <sup>th</sup> Feb 7pm   Weds 20 <sup>th</sup> Feb 1pm
	<b>EIGHTH GRADE</b> Comedy, Drama   1hr 34mins   M: Sexual references, Language Thirteen-year-old Kayla endures the tidal wave of contemporary suburban adolescence as she makes her way through the last week of middle school -- the end of her thus far disastrous eighth-grade year. Wed 13 <sup>th</sup> Feb 7pm   Sun 24 <sup>th</sup> Feb 7pm		<b>THE NOTEBOOK</b> Drama, Romance   2hr   M: Violence A poor yet passionate young man falls in love with a rich young woman, giving her a sense of freedom, but they are soon separated because of their social differences. <i>Love</i> Thur 14 <sup>th</sup> Feb 7pm
Wed	Thur	Fri	Sat
		1 How to train your dragon - 1pm Spiderman 7pm	2 Dragonball Super 1pm McQueen - 7pm
6 McQueen - 1pm Spiderman - 7pm		8 Dragon Ball Super - 7pm	9 How to train your dragon - 1pm The Favourite - 7pm
13 The Favourite - 1pm Eighth Grade - 7pm	14 The Notebook - 7pm	15 Bohemian Rhapsody - 7pm	16 The Kid who would be King - 1pm Glass - 7pm
			Sun
			3 **BOUTIQUE** The Favourite - 7pm
			10 Storm Boy - 7pm
			17 Instant Family - 7pm

# America the Beautiful comes to Taranaki



Miles of cars at Americarna.

Americarnival from 10am-3pm.

Cars will be on display throughout the main Street, and there will be stalls at Huatoki Plaza and Currie Street. There will be free activities for the kids on Puke Ariki Landing and music

from the Southern Diplomats (10:30am – 2:30pm) at Huatoki Plaza. This is a free family fun day.

At 10:30am and 12:30pm Line Dancing there will be on the street outside TSB Bank, so when you hear the music start join in the

fun – they will teach you the moves.

The Marching Girls will perform Devon Street between Currie and Liardet Streets at 11.30am..

At 1:30pm Chevy Vega Nitro Funny Car of Karl Boniface will fire up at the

corner of Liardet and Devon Street

At the same time, Nitro Altered Drag Car of Dave Gould will fire up outside Peggy Gordons Celtic Bar, as will the Double Engine Drag Car of Ken Hopper and Mark Vincent outside Crowded House Bar & Eatery.

For those outside New Plymouth wanting to experience the fun of Americarnival, free community buses will run from Hawera, and Opunake to New Plymouth and return.

“We would like to make the free family day in New Plymouth more accessible to those in the more remote areas of Taranaki and take away any financial burden to get to the Carnival,” says co-ordinator Nadine White.

“All activities are free once you get there. We want to encourage families to get out and enjoy a day together that provides something for everyone – cars, fun, shopping, food and music. Bring a picnic and enjoy lunch at Puke Ariki Landing or the Clock Tower gardens.”

Seat bookings are essential – you will not be able to turn up at the pick-up locations and hop on the bus without having pre booked. Bookings can be made right up until February 20.

How to book:

Opunake to New Plymouth return email [pickering.motors@xtra.co.nz](mailto:pickering.motors@xtra.co.nz) to book your seats

Hawera to New Plymouth return email [weirbros@xtra.co.nz](mailto:weirbros@xtra.co.nz) to book your seats



Ash Heydon from Heydon Priest Ltd checked out displays at Americarna last year.



FREE FAMILY FUN DAY

## AMERICARNIVAL

SUPPORTED BY SEE IT IN THE CITY

American cars on display throughout New Plymouth CBD. Free children's activities at Puke Ariki Landing, craft stalls in the Huatoki Plaza and on Currie Street, Music and much more!

**10:30am**

- The Line Dancing Girls will be dancing on Devon Street Central

**11:30am**

- The Marching Girls will perform their routine on Devon Street Central

**12:30pm**

- The Line Dancing girls will be dancing on Devon Street, join in if you want to!

**1:30pm**

- The Nitro Altered Drag Car of Dave Gould located outside Peggy Gordon's
- The Chevy Vega Nitro Funny Car of Karl Boniface located cnr of Devon & Liardet Streets
- The Nostalgia Rail Drag Car of Ken Hopper & Mark Vincent located outside Crowded House.

These Drag cars will Start Up and you will be able to feel the noise!

Seat Bookings are essential as limited seats are available. Contact [pickering.motors@xtra.co.nz](mailto:pickering.motors@xtra.co.nz) with your booking details prior to the 20th February 2019 to book your seat.



## Saturday 23<sup>rd</sup> February 2019 FREE FAMILY BUSES

OPUNAKE - NEW PLYMOUTH - OPUNAKE			
TOWN	LOCATION	ARRIVAL	DEPART
OPUNAKE	Opunake Motors - Service Station - Tasman Street		8:30am
RAHOTU	Rahotu School - South Road	8:40am	8:47am
PUNGAREHU	Opposite RD1 - South Road	8:55am	9:02am
WAREA	The old Warea Stores - South Rd	9:10am	9:17am
OKATO	Okato Takeaways - Carthew Street	9:27am	9:34am
OAKURA	Oakura Hall - South Rd	9:45am	9:52am
SPOTSWOOD	Opposite Spotswood College - South Rd	10:07am	10:15am
NEW PLYMOUTH	CBD Bus Depot	10:25am	3:00pm

3:00pm - Your return bus will depart from the drop off location unless otherwise advised by the bus driver on the day.

Book your FREE seat on the bus NOW by contacting [pickering.motors@xtra.co.nz](mailto:pickering.motors@xtra.co.nz)